



FLOWER SHOW flowers

VOLUME 08 Winter 2017



Departments

6. DEAR FRIENDS

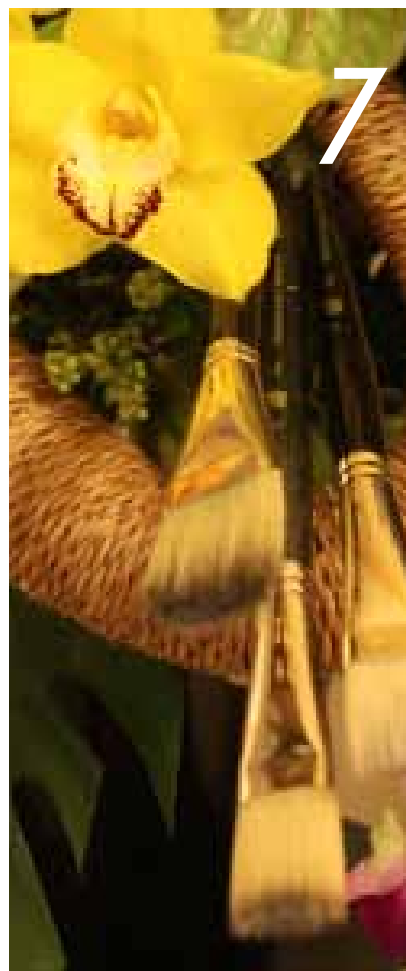
50. FLORAL SAMPLER

60. LEAFING THROUGH

73. FSF RECIPES

74. DECORATED WREATH

76. SAVE THE DATE



Features

7. FLORA IN WINTER

Let's visit the Worcester Art Museum Flower Show, Flora in Winter. Designs by professional florist and garden club designers alike.

36. IKEBANA

Ikebana is the art of Japanese floral design. Students of ikebana may study for years and years, continually honing their skills. It is a discipline of controlled restraint and obedience to the natural elements in nature and to the plant material itself.

61. NEWPORT FLOWER SHOW 2016

The 2016 Newport Flower Show was grand and beautiful. The great hall was filled with elegant floral designs and the outdoor tents had an abundance of horticultural exhibits. Enjoy the snapshots from last years' show and mark your calendar for June 23 – 25, 2017 for "Fête Des Fleurs: Paintings and Parterres" to be held at Rosecliff Mansion in Newport, Rhode Island.

Dear Friends,

In the Winter 2017 edition we have floral designs from the Worcester Art Museum, *Flora in Winter*. Galleries and hallways were filled with creations from professional designers and garden club members alike. Paintings and sculptures were the inspiration for these creations but the flowers were an invitation to enjoy a breath of Spring in the cold month of January.

From the 2015 Ikebana show at Tower Hill in Boylston, Massachusetts, we have some photos. Ikebana designers representing several of the Ikebana schools displayed their creations for all to enjoy. There are several schools of ikebana...to name a few Chiko, Ichiyo, Ikenobo, Ohara and Sogetsu. Information on others may be found at Ikebana International. I encourage everyone to read more.

In our Floral Design Sampler this edition there are hints on seasonal creations that may work for the upcoming holidays. Valentine's Day need not be red anymore...think about passionate purple. Green is all about St. Patrick's Day and eggs a tradition for many for spring and Easter.

The Newport Flower Show 2017 will be coming soon. Photos from the 2016 show are posted for your enjoyment. Floral artist from around the country come to participate and judge this grand show at the grand venue at Rosecliff Mansion. Mark your calendars ... June 23 – 25, 2017 for "Fête Des Fleurs: Paintings and Parterres" and set your GPS for Newport, Rhode Island for this floral extravaganza.

MaryEllen O'Brien
Editor

Flora in Winter

January 2017
Worcester Art Museum
Worcester, Massachusetts

MaryEllen O'Brien
Photos © MaryEllen O'Brien 2017





FLOWER SHOW flowers

MaryEllen O'Brien
Editor

Layout & Design
MaryEllen O'Brien

FLOWER SHOW flowers
Copyright © 2017

All rights reserved. No part of this publication may be reproduced, distributed, or transmitted in any form or by any means, including photocopying, recording, or other electronic or mechanical methods, without the prior written permission of the magazine editor, except in the case of brief quotations embodied in critical reviews and certain other non-commercial uses permitted by copyright law. To request permission to reprint an article or photo, please email:

memo.obrien@hotmail.com

Subject Line: Permission Request For

FLOWER SHOW flowers

FLOWERSHOWflowers.com

Flora in Winter WORCESTER ART MUSEUM

It was cold outside and there was snow on the ground this past January, but a winter escape beckoned at the Worcester Art Museum in Worcester, Massachusetts. The museums' *Flora in Winter 2017* was held on January 26 - 29.

The museum was in full bloom. Floral designs filled the galleries and hallways enchanting the visitors. Each gallery in the museum had a floral design interpreting a piece of artwork. Painting, sculptures and artifacts came to life through the arrangement of colorful flowers.

While some designs were filled with tropical flowers, others had the most precious springtime flowers...all were so delightful and held the promise of spring to this northern climate. Designs were done by professional floral designers and garden club members alike. All extremely well thought out and done to the highest standards.

If you didn't get in from the cold and into *Flora in Winter 2017* this year...do make plans to visit this alluring event next year.





Ti leaves, Split Leaf Philodendron and Sago Palm are used here as strong foliage shapes against the more delicate Gloriosa Lilies, Birds of Paradise and seeds from a Palm tree. Notice the cutwork in the Ti leaves to accent the hieroglyphs of the stone art.

2017



Surrounded by stonework, this cement color urn is the perfect container for this floral design filled with Forsythia, Gladiolus, Oncidium Orchids, Roses, Mums and Craspedia...and all in yellow. The Split Leaf Philodendron demands your attention and Asparagus Fern foliage softens and cascades down this very tall and impressive floral creation.



A reproduction bust was the focus for this head dress design that was filled with Seeded Eucalyptus, Palm fronds, Oncidium Orchids, Roses and Gerbera Daisies.

2017



A group of wire covered Curly Willow stems create a rhythmic element in this creation. Sago Palm, Ruscus, Salal foliage and several other greens are used to fill. Calla Lilies, Roses, Blue Eryngium Thistle and Wax-flowers are placed throughout the design with added interest from dried Lotus pods and Sponge Fungi.



The dried Cecropia leaf and tree Fungi juxtaposed against the lime green Cymbidium Orchids offers the viewer an interesting contrast in this design. The thin leaves of the Eucalyptus serve to soften and act as an intermediary between these two elements.

2017



The countess is well represented with cascading dried Cecropia leaves. The white back side of the leaf flows as does her dress in the painting. White Dendrobium Orchids and Ginestra complete this majestic portrait. Branches of Quince add height and peach tone Amaryllis denote the faces in this portrait.



Contrasting colors and textures add much interest to this design. The Viburnum and Ivy contrast with the warm hues of Calla Lilies, Roses, Amaryllis and Hypericum berries.

2017



The strong statesman-like portrait has been captured through the use of line and color in this design. The bold orange Pincushion Protea and upright Heliconia perfectly reflect the vivid color of the jacket, while the white Roses and yellow Calla Lilies, Asiatic Lilies and Craspedia the shirt and vest of this gentlemen.



White Lilies, red Amaryllis, Leucadendron 'Safari Sunset', Pincushion Protea, Hellebores, Agapanthus with Curly Willow and Pussy Willow branches fill this design.

2017



Blue Eryngium Thistle, Leucadendron and white Stock flowers are carefully placed to represent the Madonna and Child statue. Subtle blue coloration is achieved with the Eryngium and white Stock representing the Child. Painted blue branches cleverly woven through the design gives a path for the viewers' eye to follow.



Emerald green foliage successfully contrasts with the vivid pale orange roses and even paler Amaryllis buds. Lily Grass stems curl and twist recreating the movement of the round puffy sleeves in the painting adding to the rhythmic movement within the floral design

2017



A combination of dried and fresh plant materials were used to depict the bounty from the hunt. Dried Cecropia leaves, Fungi and Driftwood contrasted with fresh stems of Spray Roses, Hypericum Berries, Leucadendron, painted Lily Grass and 'Green Trick' Carnations. Both color and textures offered the viewers a strong sense of contrast.



This still life painting was captured with the plant materials used in the floral design. Iris, Tulips, Craspedia, Ranunculus, Hypericum berries and Magnolia leaves were nicely placed to recreate the paintings' design.

2017



Not pictured here are the baskets that this floral creation was designed after. Twisted reed colored red represents the basketmakers materials. In the floral design the red Ginger spikes offers a clever counter balance to the twisted reed.



Strong lines in the painting are captured with the black container used in this design. Calla Lilies, pink Protea blooms and flowers from a Bromeliad complete this abstract floral design.

2017



The King Protea in the floral design aptly captures the face in the painting. Green foliage radiates around the Protea to bring our attention to it as the Contorted Hazelnut slowly brings our focus downward to the blooms of the Gloriosa Lilies.



Warm and cool colors in this design accentuate the painting. Roses, Button Pom Poms, Eucalyptus, Cymbidium Orchids and Calla Lilies contrast against the cool blue vase.



Photo ©Kathy Michie 2017

In the painting the tiger peeks out to the viewer. The floral design captures the playful tiger with orange Gerbera Daisies, orange Pincushion Protea, green cushion Pom Pom Mums as eyes. Green Spider Mums, 'Green Trick' Carnations and Cedar stems make a happy grassland...And who can't smile at the green Anthuriums crocodile.



2017



The floral design on the left was interpreted from the above sculpture of Cleopatra. The wire fencing was covered with white yarn and cotton balls to depict the flowing fabric in the statue. The undulating bleached wooden branches represent the asp. White Phalaenopsis Orchids, Cecropia leaves and bleached Amaranthus complete this monochromatic design placed upon a white cased glass vase.



Warm tropical colors in this design graced the hall leading to the galleries.

2017



Tropical flowers in pink and yellow greet passersby and beckon them to the galleries.



This artist themed design was perfect for the Museum venue....How appropriate!

2017



This horizontal design rises up nearly ten feet. It is filled with branches, Sago Palm leaves, Pincushion Proteas, Cymbidium Orchids, Roses Callas and so much more.

REBANA



Design by: MaryEllen O'Brien

CHIKO

ICHIYO

IKENOBO

MISHO

OHARA

RYUSEIHA

SAGA GORYU

SHINPA SEIZAN

SOGETSU

Ikebana is the art of Japanese floral design. Students of ikebana may study for years and years, continually honing their skills. It is a discipline of controlled restraint and obedience to the natural elements in nature and to the plant material itself.

There are rules regarding placement of flowers, branches, leaves and grasses. The restrained use of materials so common to ikebana is the essence of ikebana and is what appeals to us. It is the essence of nature itself. Natural elements are distilled to create the most interesting interpretations of the art of nature. Its presentation is pure, but not simple. Although the finished design has the appearance of simplicity...placement of all components is considered and judged against nature.

As the seasons change, nature too changes. Ikebana reflects the seasons with its plant materials. In Spring we see budding branches and delicate Spring blooms. Summer is more abundant. In Autumn the colors change and Winter is shown through scarcity of plant materials. Containers speak to the seasons as well. Containers with small or covered opening speak of Winter. They are closed and sheltered; while open containers showing water relate to Summer.

Ikebana is symbolic for the appreciation of Nature.



Design by: MaryEllen O'Brien



TOWER HILL BOTANIC GARDEN



IKEBANA

Tower Hill Botanic Garden in Boylston, Massachusetts hosted an Ikebana Flower Show in 2015. The following is a sampling from that show. Many of the designers were members of IKEBANA INTERNATIONAL, an organization dedicated to the promotion of ikebana and the appreciation and practice of this Japanese floral design..



TOWER HILL BOTANIC GARDEN





TOWER HILL BOTANIC GARDEN





TOWER HILL BOTANIC GARDEN





TOWER HILL BOTANIC GARDEN



JAUNUARY • FEBRUARY • MARCH • APRIL

Floral Design Sampler....It's Spring Fever!

Tools • Supplies • Suggested Plant List • How To Techniques

MaryEllen O'Brien
Photos © MaryEllen O'Brien 2017



Design by: MaryEllen O'Brien



Tools

Clippers, Jack Knife and/or
Joyce Chen Scissors
Glue Gun

Supplies

1 Round vase
(12" diameter x 4" sides)
1-2 Floral Foam blocks
Floral Tape as needed
Fern Pins
Round Toothpick/Skewers

Plant Materials

Small green foliage
Salal or Ivy, etc.
Green Reindeer Moss
6 interesting branches 24" tall
Fruit tree branches
6 stems Clematis vine
6-8 Tulips
10-12 Roses
12 + dried mini Lotus pods

Technique

- Cut wet floral foam to fill the bottom of the container.
- Add floral tape across if needed.
- Plunge the fruitwood branches into the wet floral foam. Do not wiggle or try to readjust them as this will undermine their integrity and rigidity into the foam.
- Cover the remaining floral foam with short foliage stems and flowers. Use your Reindeer Moss here as well and secure with fern pins. This will be the base of your floral design.
- Initially, I placed the stems of Clematis throughout the design. Their stems are thin and early placement was essential. Insert a variety of heights... short, medium and tall.
- Roses were added next. Again use a variety of lengths throughout the design - short, medium and tall.
- Tulips were added next. Stems were woven through the branches and foliage for interest.
- Insert toothpicks into the Mini Lotus pods and place in the base of the design. Glue other Lotus Pods onto the stems of the fruitwood branches.

HINTS: Water your design upon completion. This design will keep for 6-7 days with little care. The design is easily adaptable to seasonal changes. Imagine all your choices.



Tools

Utility Scissors or metal shears,
Clippers, Jack Knife and/or
Joyce Chen Scissors

Supplies

Water Tubes
Aluminum Rain Gutter Guard
Dowel stand
Midelino Sticks
Spray Paint

Plant Materials

Calla Lilies
Tulips
Roses
Clematis Vine

Technique

- Cut a length of the aluminum rain gutter guard. This can be found at your local hardware store. Cut approximately 6 feet.
- Turn over both ends and flatten to hide any rough edges.
- Begin to twist and bend the aluminum gutter guard to a shape that is pleasing to you.
- When you are pleased with your piece attach it to your dowel stand. At this point you may choose to spray paint both the aluminum and the stand to match. Here I chose to paint the stand a similar silver color to match the aluminum.
- Next wire on Midelino sticks to add color and rhythm to your design.
- Begin adding your plant materials. Delicate stems can go through the opening in the wire to the rear and into water tubes. Water tubes may be disguised with Moss, Salal leaves wrapped around the tubes or even anodized aluminum wire to cover the tubes.
- Continue adding more flowers until a pleasing array is achieved.



Design by: MaryEllen O'Brien

Green with Flowers... it's St. Patty's Day!



Design by: MaryEllen O'Brien



Technique

- Place a piece of trimmed wet floral foam into a rectangular container. Be sure to keep the level of the foam below the edge of the vase.
- Begin placing trimmed short stems of budded Dogwood branches into the floral foam. Keep all branches in the front portion of the floral foam. The budded stems offer an interesting texture to the design.
- Next add your Spider Mums or a similar flat open faced flower such as Gerbera Daisies. Place the first flower into the middle portion of the design. This will be the lowest flower. Add each consecutive flower overlapping the previous for a full appearance.
- Add Hydrangeas
- Add several pieces of tall foliage to the rear of the design. Add water as needed to the vase.
- Cover the exposed floral foam with polished river stones or any other filler material to hide the foam.

Tools

Clippers, Jack Knife and/or Joyce Chen Scissors

Supplies

1 long rectangular vase
Floral Foam
Floral Tape as needed
polished stone pebbles or other suitable filler materials

Plant Materials

2 stems budded Dogwood branches
7-9 stems green Spider Mums
4 - 5 stems green Hydrangea
1 bunch mixed foliage greens



Tools

Joyce Chen Scissors, Jack knife or Clippers

Supplies

Floral Foam
Midelino Reed Sticks
Easter Eggs (real colored eggs or plastic ones)

Plant Materials

1 Supermarket bouquet containing the following or similar plant materials:
3 stems Solidago
3 stems Alstroemeria
3 stems mini Daisy Mums

Plant Materials (cont.)

1 Supermarket bouquet containing the following or similar plant materials:
1 Asiatic Lily stem
2 Gerbera Daisies
20 stems Daffodils

Technique

- Place trimmed floral foam into the center of a round ceramic vase level with the vase edge. Make sure that you have at least 1 inch of space around the centered foam.
- Cover the top of the floral foam with Solidago and Mini Daisy Mums to hide the foam.
- Take Midelino sticks in bunches of 2 - 4 pieces and create an ovoid dome shape by placing the Midelino into the sides of the floral foam.
- Weave Alstroemeria, Lilies and other flowers into the cage that you just created. Large Gerbera Daisies work best low into the design.
- Add water.
- Lastly add the Daffodils in the open perimeter around the vase rim using the open 1 inch space around the floral foam. Daffodil stems are too weak to go into the floral foam and will bend and break. Add a few Easter eggs for fun. They may be real eggs colored or not or even colorful plastic shaped eggs too. Now you have an Easter egg hunt for your dining table.

Egg Hunt



Design by: MaryEllen O'Brien



Eggs-actly



Tools

Joyce Chen Scissors, Jack
knife or Clippers

Supplies

Clear Glass Vase
Egg Shells - clean & dried
Dried Split Green Peas
(from your supermarket)

Plant Materials

Miniature Daffodils
Iris
Fern Fronds
Tulips

Substitute Plant Material Suggestions

Narcissus
Anemones
Ginestra
Grape Hyacinths
Even a supermarket bouquet
would work for this design

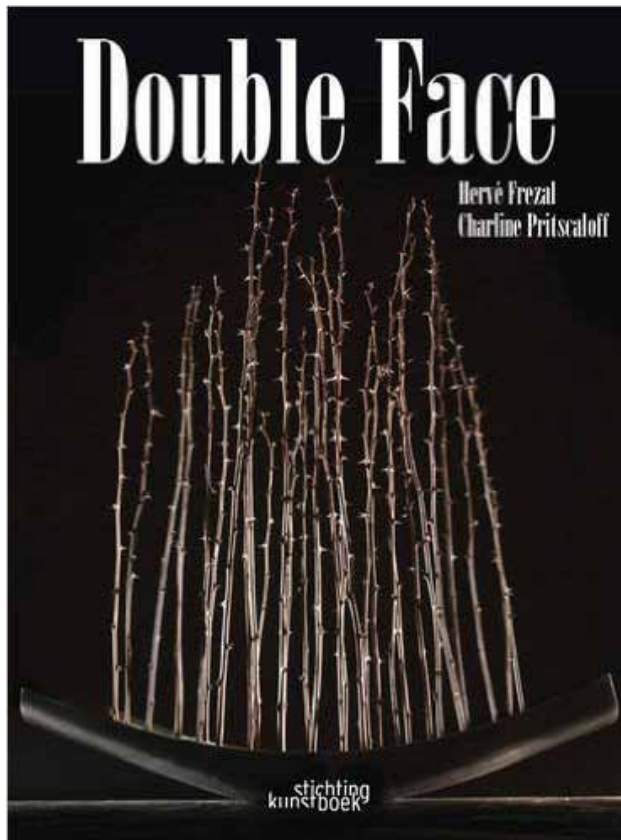
Technique

- You certainly need to break a few eggs with this design. Break open 12 or so eggs at the top portion of the egg. Wash and dry the egg shells.
- Into a clean low glass vase, pour enough dried split peas to create a 3" base in the vase. Add the dried eggs shells, carefully pressing them into the peas to give support around the shells.
- Add water to each shell being careful not to splash water into the split peas.
- Tie or secure with rubber bands, bunches of daffodils and grape hyacinths together, making sure that they are not too tall. Randomly place these in the egg vases. Follow with the rest of your flowers and foliage. Make sure to keep your stems short. Often the petals resting against the egg shell will support the flower and keep them positioned as you place them.

Hints

Tulip petals can carefully be opened and pulled back to create a daisy like flower. The outward petals will easily rest on the egg shells without tipping.

Design by: MaryEllen O'Brien



While browsing through the offerings on Amazon.com for floral design books, I came across an interesting title. *Double Face* by Hervé Frézal and Charline Pritscaloff. Two floral designers and both winners of the 'Meilleur Ouvrier de France' in 2011. As stated on Amazon.com, they are passionate floral designers who kept in touch and decided to co-author a book on floral design.

The book is due to be released on April 27, 2017 and looks to very inspirational. Pre-orders are being taken at the cost of \$55.00

HARDCOVER: 96 PAGES

PUBLISHER: STICHTING KUNST-
BOAK (APRIL 27, 2017)

LANGUAGE: ENGLISH

ISBN-10: 9058565602

ISBN-13: 978-9058565600

SHIPPING WEIGHT: 1.7 POUNDS

COST: \$55.00 (US)

Gilded... Artful Living NEWPORT FLOWER SHOW 2016

The 2016 Newport Flower Show was grand and beautiful. The great hall was filled with elegant floral designs and the outdoor tents had an abundance of horticultural exhibits. Enjoy the snapshots from last years' show and mark your calendar for June 23 – 25, 2017 for "*Fête Des Fleurs: Paintings and Parterres*" to be held at Rosecliff Mansion in Newport, Rhode Island.





Gilded... Artful Living
NEWPORT FLOWER SHOW 2016





Gilded... Artful Living
NEWPORT FLOWER SHOW 2016





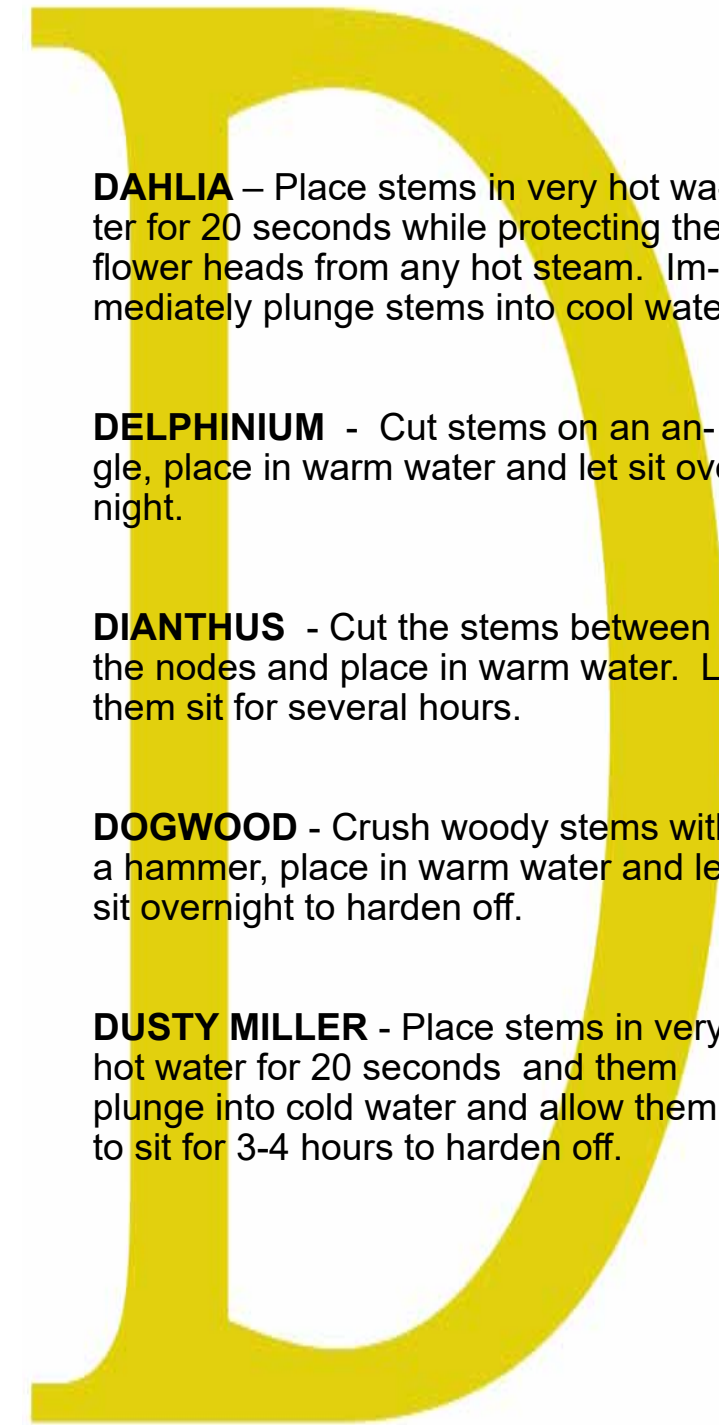
Boutonnieres with fresh plant materials

fstrecipes

to Condition Your Flowers - Featuring the letter "D"



Botanical Arts - Shoes embellished with dried plant materials



DAHLIA – Place stems in very hot water for 20 seconds while protecting the flower heads from any hot steam. Immediately plunge stems into cool water.

DELPHINIUM - Cut stems on an angle, place in warm water and let sit over night.

DIANTHUS - Cut the stems between the nodes and place in warm water. Let them sit for several hours.

DOGWOOD - Crush woody stems with a hammer, place in warm water and let sit overnight to harden off.

DUSTY MILLER - Place stems in very hot water for 20 seconds and then plunge into cold water and allow them to sit for 3-4 hours to harden off.



For Your Garden Shed Door

The Decorated **WREATH**

Featuring a Garden Hose Wreath

An all weather wreath that's easy to make

Tools

Scissors
Clippers
Glue Gun
Spool Wire

Supplies

Garden Hose
Small Watering Can
Ribbon
Artificial Flowers and Foliage
Gardening Gloves

Optional Materials

Grapevine
Seed Packets
Garden Trowel
Any interesting Garden Tools



USA

February 22 – 26, 2017

Northwest Flower & Garden Show
Washington State Convention Center,
Seattle, Washington

February 24 – 26, 2017

Arkansas Flower and Garden Show
Statehouse Convention Center
Little Rock, Arkansas

March 11 – 19, 2017

Philadelphia Flower Show
“Holland, Flowering the World”
Pennsylvania Convention Center
Philadelphia, Pennsylvania

March 22 – 26, 2017

Boston Flower Show
Seaport World Trade Center
Boston, Massachusetts

April 8-9, 2017

Coronado Flower Show
“Go Out On A Limb”
Spreckels Park, Coronado, CA

June 23 – 25, 2017

Newport Flower Show
“Fête Des Fleurs: Paintings
and Parterres”
Rosecliff Mansion
Newport, Rhode Island

GREAT BRITAIN

APRIL 7- 9, 2017

RHS CARDIFF FLOWER SHOW:
enjoy award-winning gardens, beautiful floral marquees and brilliant spring plants. Held in the parklands of Cardiff Castle, this show is a celebration of the best in Welsh gardening, food, crafts and culture.

MAY 23 - 27, 2017

RHS CHELSEA FLOWER SHOW
arguably the world's greatest Flower Show, this iconic event is the highlight of the UK gardening calendar and a truly unforgettable social occasion, attended by royals and celebrities alike. Enjoy show-stopping garden designs and an explosion of art and color in the most fashionable part of London.

JUNE 7 – 11, 2017

RHS CHATSWORTH FLOWER SHOW
New for 2017, the RHS has announced the annual RHS Chatsworth Flower Show will take place in the beautiful surroundings of the Chatsworth Estate, family home of the Duke and Duchess of Devonshire. Visitors can expect all their favorite RHS Show features, including a fantastic range of specialist nurseries, outdoor lifestyle shopping and garden inspiration.



BUDDING
STORIES
FOR
OUR
NEXT
ISSUE





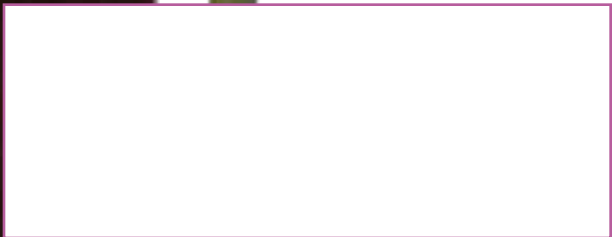
FLOWER SHOW

flowers

Volume 08

Number 1

Winter 2017



Design by: MaryEllen O'Brien