



FLOWER SHOW flowers

VOLUME III NUMBER 1 WINTER 2016

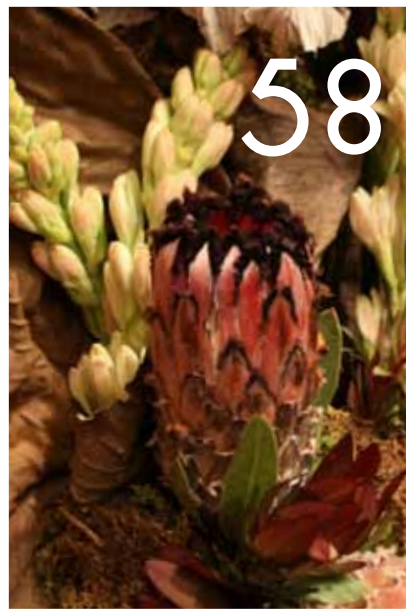


Departments

- 6. DEAR FRIENDS
- 57. LEAFING THROUGH
- 58. SAVE THE DATE
- 59. BUDDING STORIES



57



58



21



7

Features

- 7. WINTER DECOR
Sparkles for the Holidays
- 21. FLORA IN WINTER
The Worcester Art Museum ushers in Spring

DEAR FRIENDS

It has been the most unusual winter here in New England. The El Niño of 2015-2016 brought us some unusually warm temperatures and no snow for November through January. On the first of January my Hellebores were in bloom...the most splendid they had ever been. What a sight to usher the New Year.

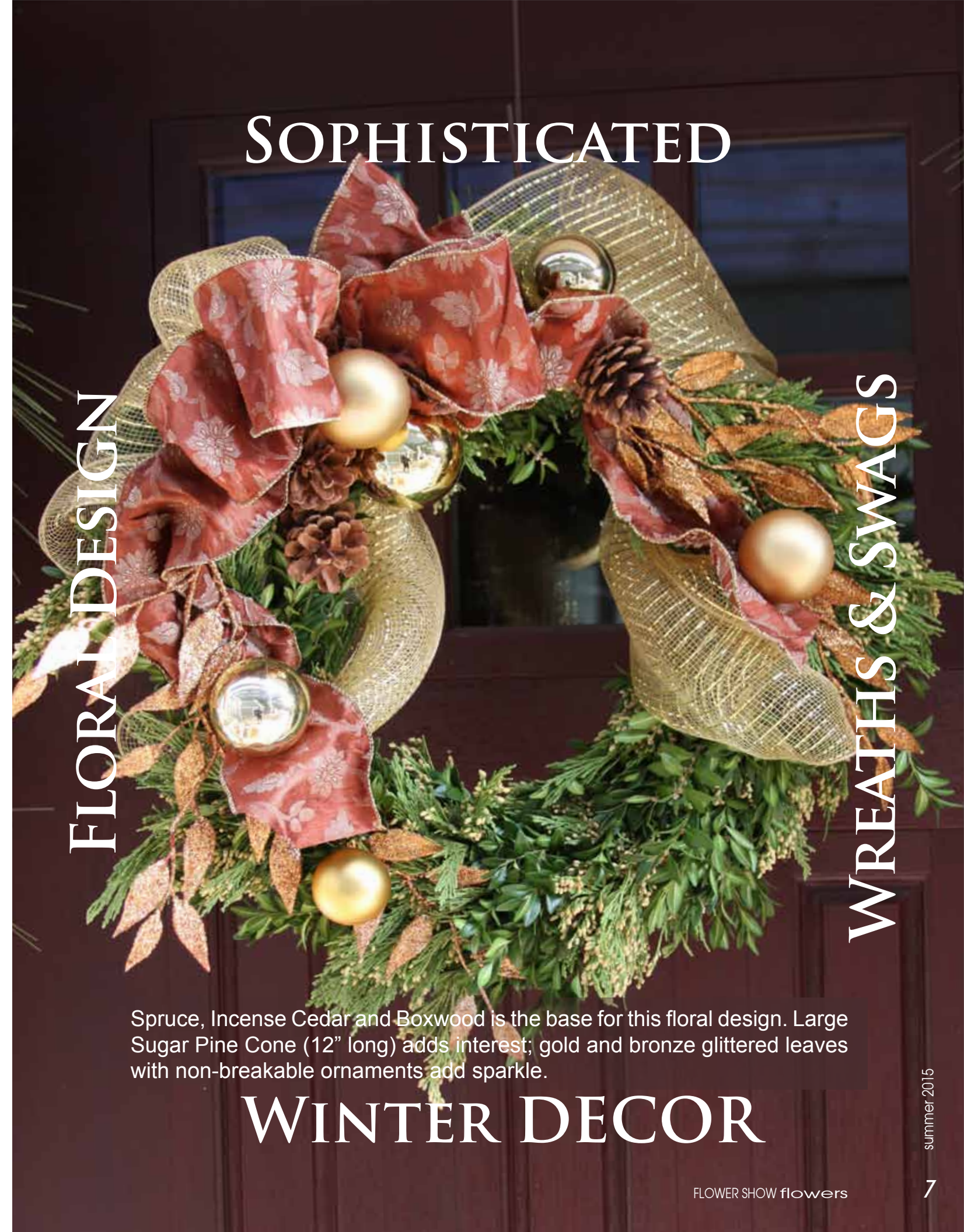
Colder temps have finally descended upon us and snow has finally fallen and covers the ground. Temps are cold as one might expect here in these northern regions. It finally feels like winter and with these colder tempsI bring you the Winter edition of Flower Show Flowers.

For the month of December we have some holiday wreaths and floral pieces to celebrate the seasonal holidays and the sparkle for the New Year. What better than to add light and brightness to these short dark days of winter than with shimmering holiday décor?

In January, the Worcester Art Museum, in Worcester, Massachusetts hosted *Flora in Winter*...it was a breath of Spring for all who eagerly anticipated the onset of spring. Tulips, Daffodils and more graced the galleries of the Museum. Designs inspired by the great art of the Museum...Sculpture, Contemporary Art to Renaissance Art where represented in flowers.

Before long the Spring Solstice will be here. The days will warm, the sun will shine longer and the snow will melt. Our Spring flowers will magically appear and rejoice for the new growing season is ahead of us. Floral designers will rejoice with the flowers too; they will invent new offerings with these bursting blooms.

MaryEllen J. M. O'Brien
Editor



SOPHISTICATED

FLORAL DESIGN

WREATHS & SWAGS

Spruce, Incense Cedar and Boxwood is the base for this floral design. Large Sugar Pine Cone (12" long) adds interest; gold and bronze glittered leaves with non-breakable ornaments add sparkle.

WINTER DECOR



FLOWER SHOW flowers

MaryEllen J.M. O'Brien
Editor

Layout & Design
MaryEllen J.M. O'Brien

FLOWER SHOW flowers
Copyright © 2015
by Editor: MaryEllen J.M. O'Brien

All rights reserved. No part of this publication may be reproduced, distributed, or transmitted in any form or by any means, including photocopying, recording, or other electronic or mechanical methods, without the prior written permission of the magazine editor, except in the case of brief quotations embodied in critical reviews and certain other non-commercial uses permitted by copyright law. To request permission to reprint an article or photo, please email:

FlowerShowFlowers@hotmail.com
Subject Line: Permission Request

ISSN 2331-4842

FLOWERSHOWflowers.com













Tips to keep your Evergreen Wreaths fresh...

If you have your own fresh greens (fir, spruce, cedar, etc. available in your yard), you are very fortunate. All others, who must purchase their evergreens...Buy the freshest, best quality greens that you can find.

If you intend to use your greens in a floral design be sure to recut and pound the branch ends with a hammer and place in warm water. If you are making wreaths, swags or other outdoor decorations store your evergreens in a cool location and be sure to make your decorations as soon as you are able.

Evergreen decorations may be sprayed with an anti-dessicant to seal in moisture. Place your finished decoration (if possible) out of direct sunlight and away from windy locations. Sun and wind will quickly dry out your evergreens.

Should you decide to display your wreath indoors...keep away from heat sources and sunlight and remove as soon as possible. Needles will quickly turn brown and begin to fall.

FLORA *in* Winter 2016

January 28 - 31
Worcester Art Museum
Worcester, Massachusetts





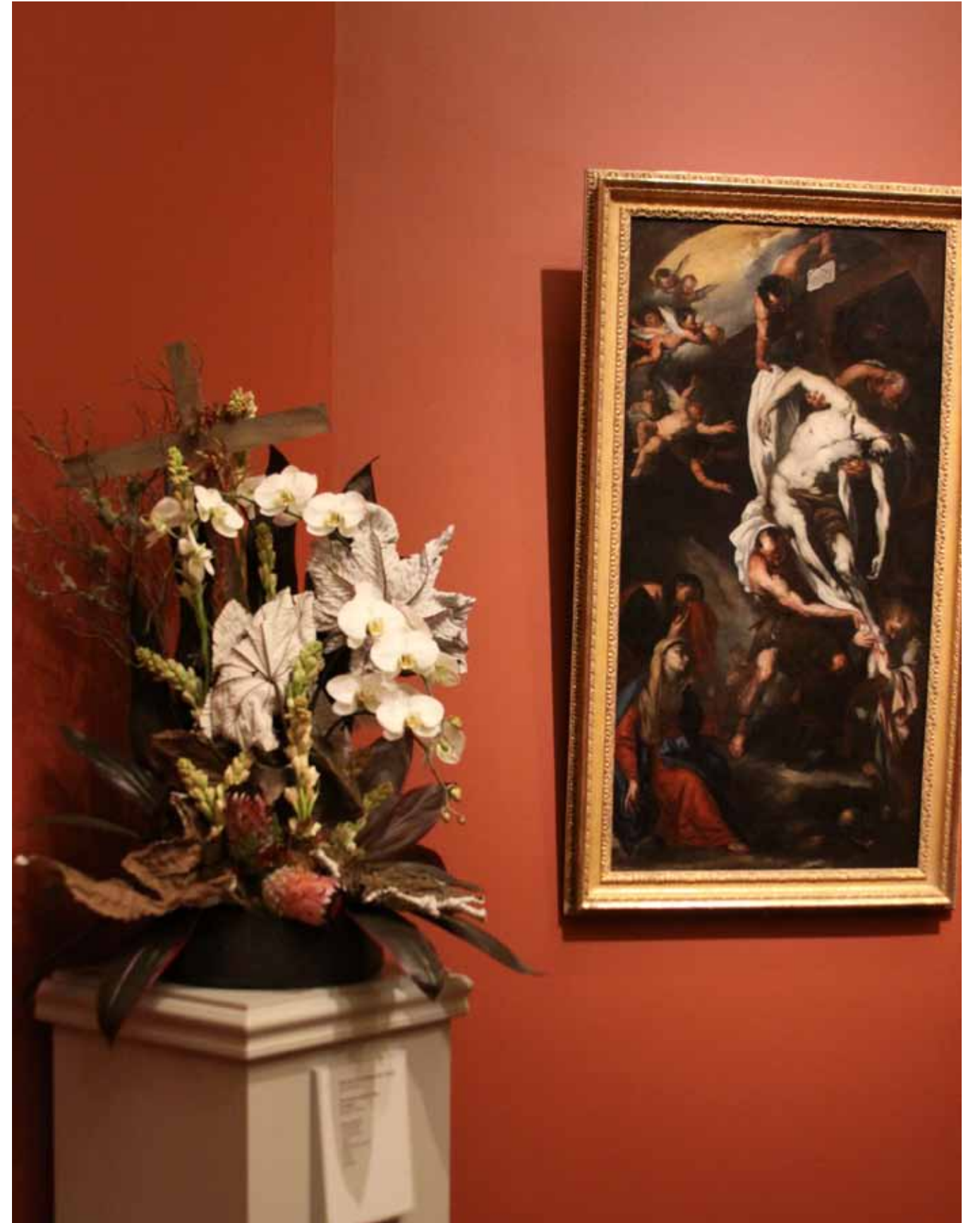








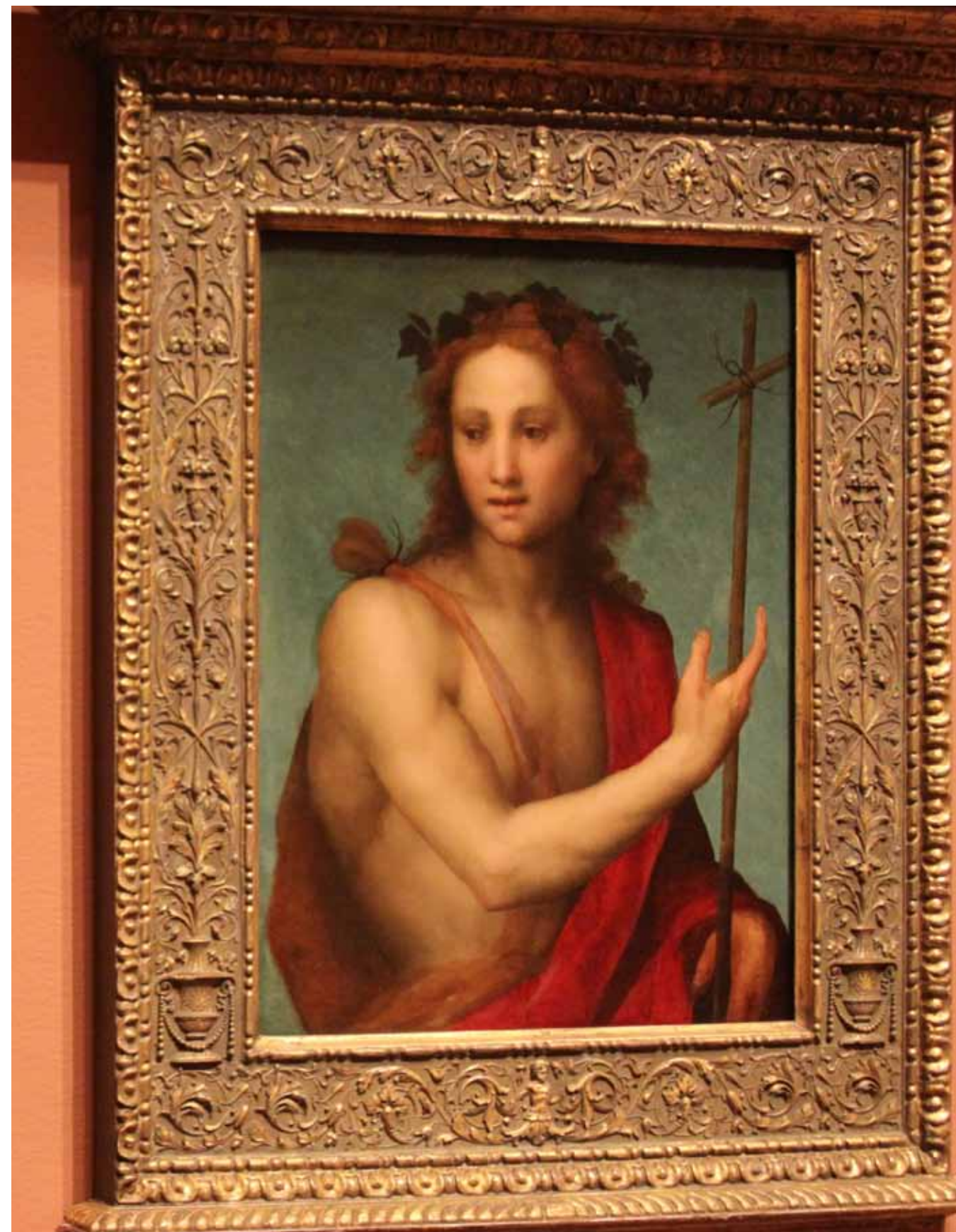
























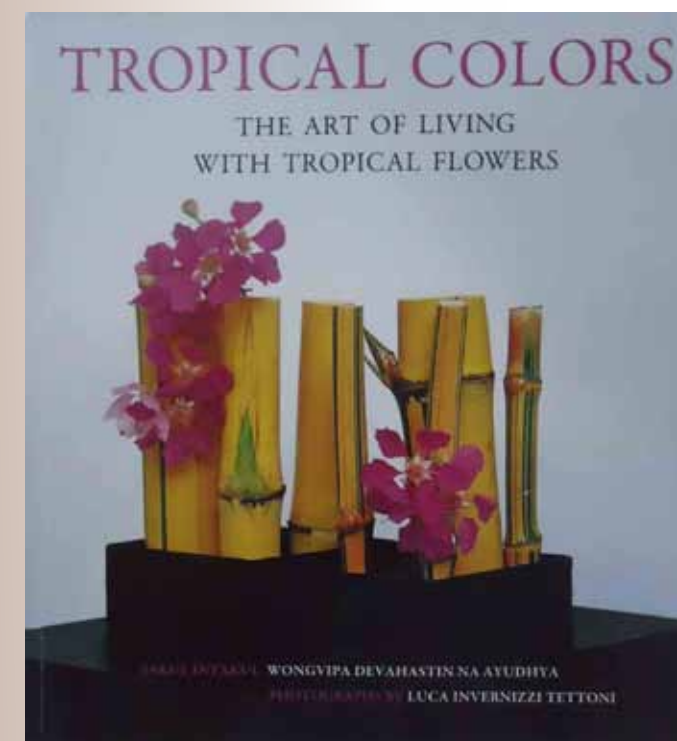
WHISPERING FLOWERS

By: Stichting Kunstboek

Published: November 24, 2014

Cost: Under \$49.00

Available through:
www.Amazon.com



TROPICAL FLOWERS

The Art of Living with Tropical Flowers

By: Sakul Intakul

Wongvipa Devahastin Na Ayudhya

Luca Invernizzi Tettoni (Photographer)

Published: February 2, 2016

Soft Cover

Cost: Under \$10.00

Available through:
www.Amazon.com

SAVE DATE *IT'S...SHOWTIME*

Your Flower Show and Events Calendar

FEBRUARY 18-21, 2016
THE 2016 RHODE ISLAND
SPRING FLOWER & GARDEN SHOW
Rhode Island Convention Center
Providence, RI

Are you wishing for Spring? Visit Providence for designed gardens, floral arrangements, wonderful horticulture and that fragrance of Springtime!

MARCH 4-13, 2016
PHILADELPHIA FLOWER SHOW

Sponsored by:
The Philadelphia Horticultural Society
See sweeping landscapes, masterful floral designs and fantastic houseplants and horticulture.

MARCH 5-20, 2016
SPRING BULB SHOW 2016 SMITH COLLEGE
NORTHAMPTON, MA

Saturday March 5 - Sunday, March 20
10:00 am to 4:00 pm daily
Fridays, Saturdays and Sundays extended hours:
4:00 to 8:00 pm - \$5 suggested donation
Glass houses full of flowering spring bulbs will delight you.

MARCH 16-20, 2016
BOSTON FLOWER SHOW

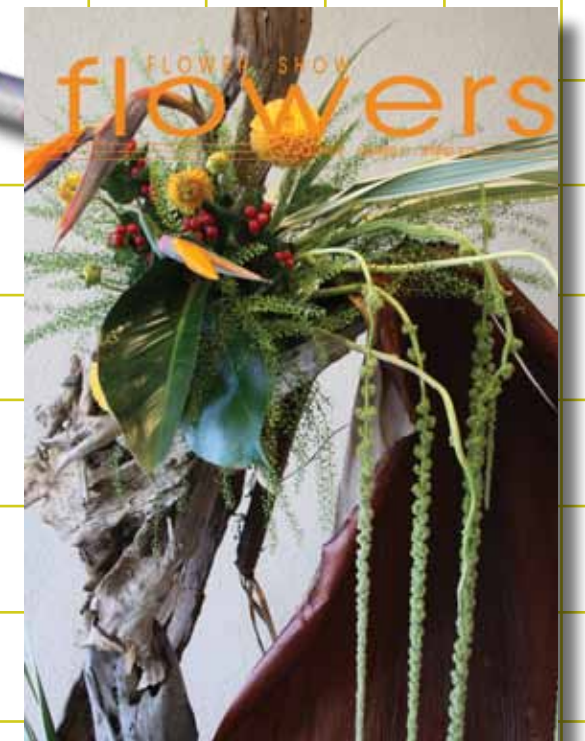
The Boston Flower & Garden Show is set to return to the Seaport World Trade Center. This year's theme is "*Nurtured by Nature*". Come and see meticulously designed gardens, floral design exhibits and houseplants and horticulture specimens.

Get your show posted:

Sent information of your flower show to
FlowerShowFlowers@hotmail.com
Subject Line: Flower Show Info



SPRING 2016





FLOWER SHOW

flowers

Volume III

Number 1

WINTER 2016

