

FLOWER SHOW flowers

VOLUME II NUMBER 3 Summer 2015





Departments

6. DEAR FRIENDS

83. LEAFING THROUGH

84. SAVE THE DATE

85. BUDDING STORIES



Features

7. FLORESCENCE - ILLUSIONS
Houston, Texas

29. TALES, TROWELS and TREASURES
Dedham, Massachusetts

37. KALEIDOSCOPE
Rochester, New York

57. BEAU • TANICAL • ARTS
Botanical Art creations

Dear Friends,

The pages of this issue are filled with photos of wonderful floral designs from many shows. With this abundance of photographs from these great shows, the pages of this edition are bursting at the seam. This means that some of the regular department features will be omitted in this expanded Summer edition.

This issue begins with an in-depth look at the designs in Houston's *Florescence, Illusions* Major Flower Show. The rooms at The Museum of Fine Art were filled with incredible floral designs that accompanied specific art pieces. While not all art work is shown...the beauty of the floral designs will speak for themselves.

The shows in Rochester and Dedham, although smaller in scale than the Houston show, had some very fine designs that I know you will enjoy. Both flower show schedules were creative and the designers responded imaginatively to these creative schedules and class titles.

We will also look at The Newport Major Flower Show that was held in Newport, Rhode Island and was sponsored by the Preservation Society of Newport County. This was their 20th anniversary flower show. It gave tribute to the American Beauty Rose, the birthplace of the rose...none other than Rosecliff Mansion the home of the flower show and to the rose's creator...George Bancroft, Newport one time proprietor of the original Rosecliff.

Last, but not least by any means...There is a close up look at some extraordinary Botanical Arts creations from several shows. All of these Botanical Arts entries were created from dried plant materials that were then painted. I hope that you enjoy the offerings in this Summer 2015 edition.

MaryEllen J. M. O'Brien
Editor

FLORESCENCE FLOWER SHOW

MUSEUM OF FINE ARTS

Illusions
Summer

Photos ©MaryEllen J.M. O'Brien2015

APRIL 28-29, 2015

HOUSTON, TEXAS 2015

summer 2015



FLOWER SHOW flowers

MaryEllen J.M. O'Brien
Editor

Layout & Design
MaryEllen J.M. O'Brien

FLOWER SHOW flowers
Copyright © 2015
by Editor: MaryEllen J.M. O'Brien

All rights reserved. No part of this publication may be reproduced, distributed, or transmitted in any form or by any means, including photocopying, recording, or other electronic or mechanical methods, without the prior written permission of the magazine editor, except in the case of brief quotations embodied in critical reviews and certain other non-commercial uses permitted by copyright law. To request permission to reprint an article or photo, please email:

FlowerShowFlowers@hotmail.com
Subject Line: Permission Request

ISSN 2331-4842

FLOWERSHOWflowers.com

MUSEUM OF FINE ARTS

Illusions

Florescence Illusion was held April 28-29, 2015 at the Museum of Fine Arts in Houston. This show was presented by The River Oaks Garden Club, The Garden Club of Houston and The Museum of Fine Arts in Houston.

This, the eleventh biennial Florescence Flower Show was nothing less than spectacular. If you were unable to attend this year's show...please take a walk through our pages of the show. The designs are sure to inspire. Then...mark your calendars for the 2017 show on April 3-4-5.

FLORESCENCE FLOWER SHOW

HOUSTON, TEXAS 2015

FLORESCENCE FLOWER SHOW



FLORESCENCE - Illusions Flower Show - Houston, TX
Division I Floral Design

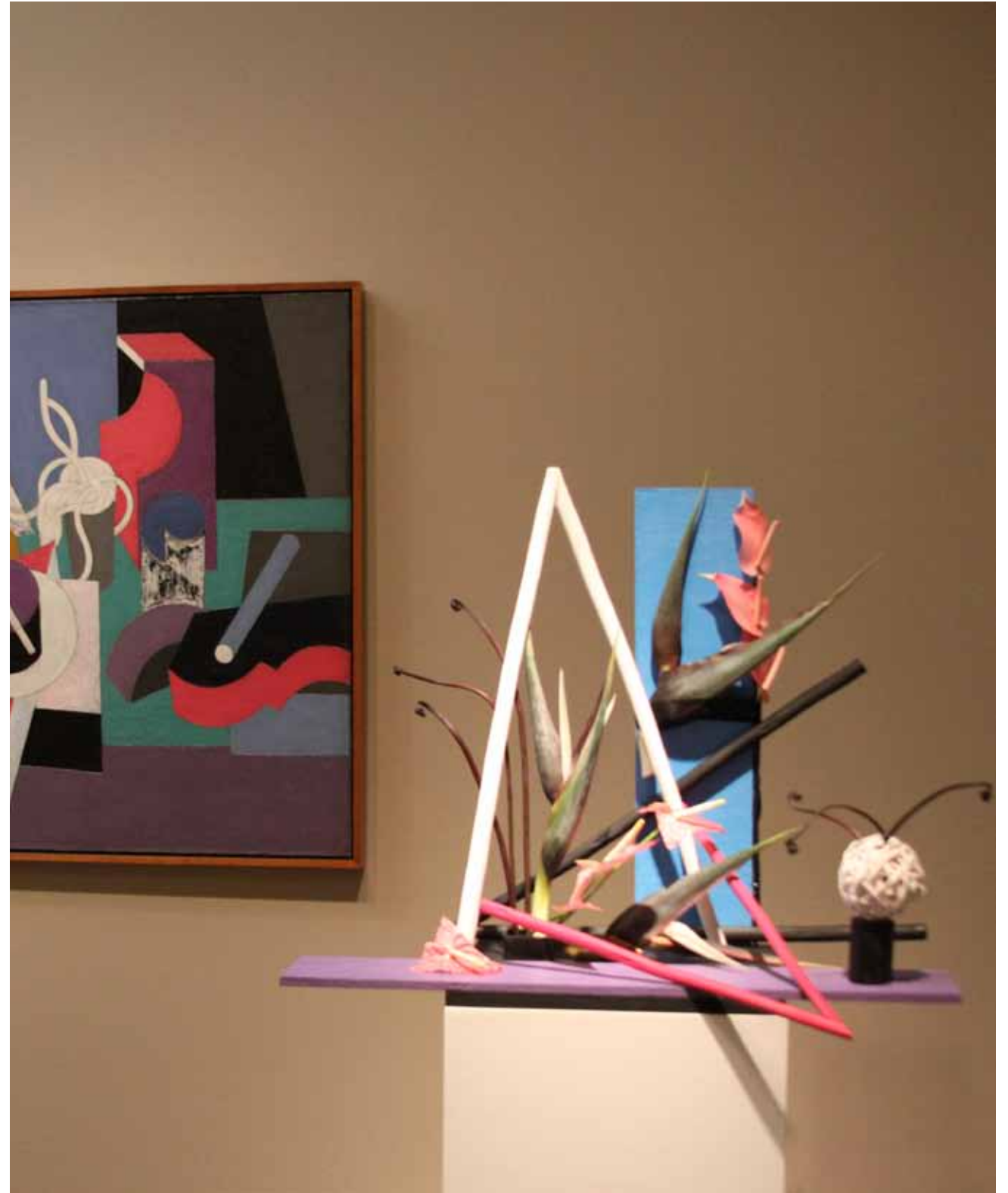


FLORESCENCE - Illusions Flower Show - Houston, TX
Division I Floral Design

HOUSTON, TEXAS 2015



FLORESCENCE - Illusions Flower Show - Houston, TX
Division I Floral Design



FLORESCENCE - Illusions Flower Show - Houston, TX
Division I Floral Design

FLORESCENCE FLOWER SHOW



FLORESCENCE - Illusions Flower Show - Houston, TX
Division I Floral Design



FLORESCENCE - Illusions Flower Show - Houston, TX
Division I Floral Design

HOUSTON, TEXAS 2015

FLORESCENCE FLOWER SHOW



FLORESCENCE - Illusions Flower Show - Houston, TX
Division I Floral Design



FLORESCENCE - Illusions Flower Show - Houston, TX
Division I Floral Design

HOUSTON, TEXAS 2015

FLORESCENCE FLOWER SHOW



FLORESCENCE - Illusions Flower Show - Houston, TX
Division I Floral Design



FLORESCENCE - Illusions Flower Show - Houston, TX
Division I Floral Design

HOUSTON, TEXAS 2015

FLORESCENCE FLOWER SHOW



FLORESCENCE - Illusions Flower Show - Houston, TX
Division I Floral Design



FLORESCENCE - Illusions Flower Show - Houston, TX
Division I Floral Design

HOUSTON, TEXAS 2015



FLORESCENCE - Illusions Flower Show - Houston, TX
Division I Floral Design



FLORESCENCE - Illusions Flower Show - Houston, TX
Division I Floral Design

FLORESCENCE FLOWER SHOW



FLORESCENCE - Illusions Flower Show - Houston, TX
Division I Floral Design



FLORESCENCE - Illusions Flower Show - Houston, TX
Division I Floral Design

HOUSTON, TEXAS 2015

FLORESCENCE FLOWER SHOW



FLORESCENCE - Illusions Flower Show - Houston, TX
Division I Floral Design



FLORESCENCE - Illusions Flower Show - Houston, TX
Division I Floral Design

HOUSTON, TEXAS 2015



FLORESCENCE - Illusions Flower Show - Houston, TX
Division I Floral Design

Tales, Trowels



Photos ©MaryEllen J.M. O'Brien2015

The Fox Hill Garden Club, hosted Tales, Trowels & Treasures in Dedham, Massachusetts Pictured above is the Best in Show that was entered in Class 4: Radiant Silhouette
A **Creative Line Design** staged on a pedestal 36" high with a 24" square top. Design may not exceed 28" from the center of the pedestal in width or depth. No height restrictions. Viewed from four sides.



TALES, TROWELS and TREASURES, Fox Hill Garden Club, Dedham, MA
Class 4: Radiant Silhouette
A **Creative Line Design** staged on a pedestal 36" high with a 24" square top. Design may not exceed 28" from the center of the pedestal in width or depth. No height restrictions. Viewed from four sides.



TALES, TROWELS and TREASURES, Fox Hill Garden Club, Dedham, MA
Class 4: Radiant Silhouette
A **Creative Line Design** staged on a pedestal 36" high with a 24" square top. Design may not exceed 28" from the center of the pedestal in width or depth. No height restrictions. Viewed from four sides.



TALES, TROWELS and TREASURES,
Class 2: Emeralds and Jade

Fox Hill Garden Club, Dedham, MA

A design consisting of all green plant material selected from the designer's garden. Staged on a pedestal 42" high with a 14" square top. Viewed from three sides.



TALES, TROWELS and TREASURES, Fox Hill Garden Club, Dedham, MA
 Class 5: Sunken Treasure
 An **Underwater Design** in which all or part of the design must be under visible water. Staged on a Cocktail Table measuring 42" tall with a 30" round top, covered in a cream colored cloth. Viewed from four sides



TALES, TROWELS and TREASURES, Fox Hill Garden Club, Dedham, MA
 Class 4: Radiant Silhouette
 A **Creative Line Design** staged on a pedestal 36" high with a 24" square top. Design may not exceed 28" from the center of the pedestal in width or depth. No height restrictions. Viewed from four sides.

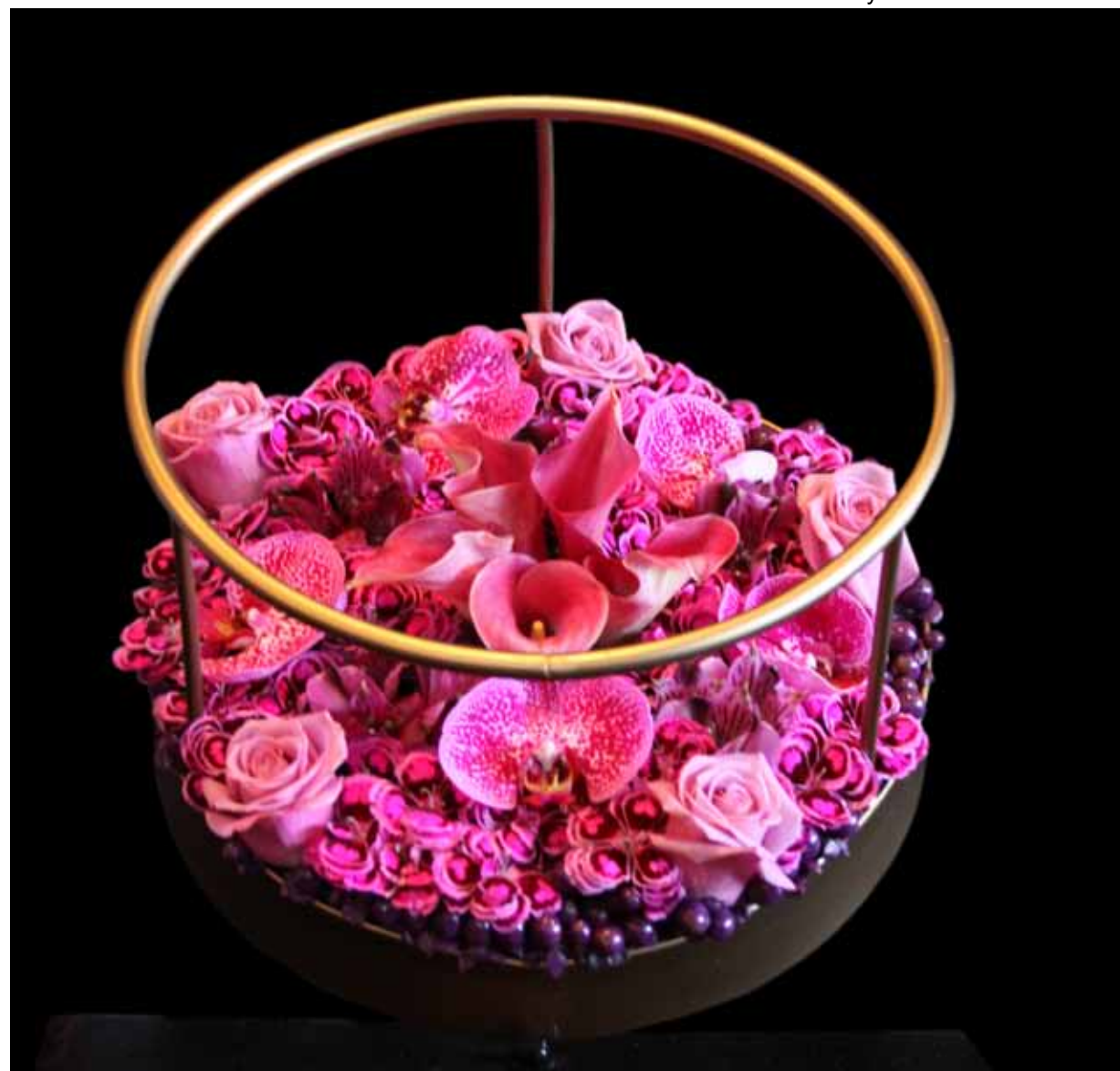


TALES, TROWELS and TREASURES, Fox Hill Garden Club, Dedham, MA
Horticulture exhibits were over flowing...This table was packed with Hosta leaf specimens.

Kaleidoscope Flower Show

Kaleidoscope Flower Show presented by
The Millbrook Garden Club

Photos ©MaryEllen J.M. O'Brien 2015



KALEIDOSCOPE FLOWER SHOW Rochester, NY (VIOLET Entry) **BLUE RIBBON**
Class 2. RedOrangeYellowGreenBlueViolet

A **Monochromatic Design** staged on a black pedestal 43" H with a 15" square top. Design may not exceed 15" from the center of the top of the pedestal on all sides. Viewed from three sides.

Color choices: Red, Orange, Yellow, Green, Blue, Violet.

Monochromatic: A design incorporating plant material of just one color, including the shade and tints of the hue. A small amount of green foliage is allowed with the chosen single color; small bit of attached non-conforming floral parts are permitted e.g. the yellow center of a purple aster. Unless stated in the schedule, the container, bases and/or stands do not need to be the same color.



KALEIDOSCOPE FLOWER SHOW Rochester, NY (YELLOW Entry)

Class 2. RedOrangeYellowGreenBlueViolet

A **Monochromatic Design** staged on a black pedestal 43" H with a 15" square top. Design may not exceed 15" from the center of the top of the pedestal on all sides. Viewed from three sides.

Color choices: Red, Orange, Yellow, Green, Blue, Violet.

Monochromatic: A design incorporating plant material of just one color, including the shade and tints of the hue. A small amount of green foliage is allowed with the chosen single color; small bit of attached non-conforming floral parts are permitted e.g. the yellow center of a purple aster. Unless stated in the schedule, the container, bases and/or stands do not need to be the same color.



KALEIDOSCOPE FLOWER SHOW Rochester, NY

Class 1. PRISM

An **Underwater Design** staged on a round black pedestal 40" H with a 16" d top. Design must not exceed 15" from the center of the top of the pedestal on all sides. Viewed from three sides.

Underwater design: A contemporary design style where all or part of the design must be under visible water.



KALEIDOSCOPE FLOWER SHOW

Rochester, NY

Class 1. PRISM

An **Underwater Design** staged on a round black pedestal 40" H with a 16" d top. Design must not exceed 15" from the center of the top of the pedestal on all sides. Viewed from three sides.

Underwater design: A contemporary design style where all or part of the design must be under visible water.



KALEIDOSCOPE FLOWER SHOW

Rochester, NY

Class 4. COLOR AND LIGHT

A design on a black pedestal 42" H with a 16" square top. Design may not exceed 15" from the center of the top of the pedestal on all sides. Viewed from three sides.



KALEIDOSCOPE FLOWER SHOW

Rochester, NY

Class 4. COLOR AND LIGHT

A design on a black pedestal 42" H with a 16" square top. Design may not exceed 15" from the center of the top of the pedestal on all sides. Viewed from three sides.



American Beauty... Timeless

Newport Flower Show 2015

Sponsored by
The Newport Preservation Society

All Photos ©MaryEllen J.M. O'Brien 2015

American Beauty encompasses many facets of life in Newport and throughout the US...Fashion, architecture, art, cuisine, music, and craftsmanship impact our daily lives and celebrate timeless style. It also honors Newport's George Bancroft and the rose he collected that has come to be known as "American Beauty".

The Newport Flower Show celebrated its' 20th anniversary on June 19-20-21. This year's flower show celebrated the roots and history of Newport. The American Beauty Rose and its developer George Bancroft were celebrated.

Mr. Bancroft was the owner of the Rosecliff Mansion the backdrop for the show. Rosecliff Mansion was fashioned after the 17th century Grand Trianon at Versailles. The flower show reminded us of the people and places that Newport is famous for...Doris Duke, Edith Wharton, Alva Vanderbilt, Dorothy Tuckerman Draper and Newport's favorite daughter, Jacqueline Bouvier Kennedy to mention a few.

The mainspeakers this year were three wonderful experts on timeless floral and garden style: Jane Godshalk, renowned floral designer, Peter Hatch, Horticulturalist and P. Allen Smith, author and television personality.

On the following pages enjoy a few of the floral designs from the show. Botanical Art entries may be seen in the Botanical Arts pages of this magazine. Go to page 73. Enjoy the show!



AMERICAN BEAUTY...Timless, Newport, R.I.

Class 10: American Beauty...Timeless
George Bancroft, an historian, statesman and rose lover, spent summers at the first Rosecliff in the late 19th century. In 1886, an exceptional rose bush with vivid crimson color, strong stems, well-proportioned blooms and a heady perfume scent was collected from his garden. It was propagated and sold by Field Brothers under the name "American Beauty".

A **Traditional Mass Design** which includes roses and is inspired by the timeless and beautiful "American Beauty" rose. Staged on a pedestal painted Rosecliff White 48" high with a 20" square top. Viewed from three sides.



AMERICAN BEAUTY...Timless, Newport, R.I.

Class 9: American Song...Endless
The American Beauty Rose has been continuously inspirational to American musicians. In 1913 the flower was celebrated by Joseph Lamb's ragtime rhythm composition "American Beauty Rag" and again in 1970 it was featured by the Grateful Dead album "American Beauty".

An **Interpretive Design** that incorporates some roses with a musical instrument and a named musician or lyricist that inspires the endless energy of American music. Staged on a pedestal painted Rosecliff White 42" high with an 18" square top. Viewed from three sides.



AMERICAN BEAUTY...Timless, Newport, R.I.

Class 8: New American Cuisine...Boundless

New American Cuisine celebrates the many tastes and flavors from around the world. It is a type of fusion cuisine that assimilates traditional American cooking styles with foreign elements of spices and other ingredients.

An **Exhibition Table Design** featuring a named country that has influenced the boundless nature of the New American Cuisine. All components and table coverings to be supplied by the designer. Displayed on a console pedestal, 36" high x 32" wide x 17-¼" deep, with attached backboard 45" high x 32" wide. Pedestal and backboard painted Rosecliff White. To be viewed from three sides.



AMERICAN BEAUTY...Timless, Newport, R.I.

Class 15: American Arts and Crafts...Countless

The Isaac Bell House in Newport is an exceptional example of the American Arts & Crafts style. Many Arts and Crafts designers sought to improve standards of decorative design. They believed that design had been debased by mechanization. Pottery and ceramic art became a very popular Arts & Crafts medium.

A design of fresh plant material from the designer's garden. The design must include a ceramic container or tile reminiscent of the countless ceramic Arts & Crafts pieces of the period. Staged in a niche. Viewed from the front.



AMERICAN BEAUTY...Timless, Newport, R.I. Class: 16 American Paintings...Wordless
Newport has been an artists' colony for hundreds of years. Today, many artists continue to paint "en plein air," capturing the sea and its ships as did artists during the 18th century.
 An **Underwater Design** to complement this wordless record of historic Newport life. Staged on a pedestal painted Rosecliff White 42"high with 18-1/2" square top. Viewed from three sides.



AMERICAN BEAUTY...Timless, Newport, R.I. Class 7: Great American Novel...Fearless
Many great American novels have been written-stories of courage, adventure and wit. Edith Wharton was an American novelist, poet and short story writer who summered at her Newport retreat, known as Land's End. She was considered the most celebrated American female author of her time.
 A design to complement a named book title authored by the legendary Edith Wharton, who managed the difficult feat of being worldly, morally scrupulous and fearless all at the same time. Staged in a niche painted Rosecliff White. Niche will be lighted from above. Viewed from front.



AMERICAN BEAUTY...Timless Newport, R.I. Class 12: American Automobiles...Tireless
America has been in love with the automobile since Henry Ford's assembly line made it possible for most Americans to own a car. Ford's invention made this conveyance commonplace.
A Mobile Design that honors the tireless American fascination with travel and automobiles. Hanging design staged from a central hook on a black metal open frame 93" high x 69" wide. Viewed from all sides.



AMERICAN BEAUTY...Timless, Newport, R.I. Class 5: American Architecture...Limitless
 Judge's Invitational Challenge Class
Today's Rosecliff was designed by American architect Stanford White and construction was completed in 1902. Today in America, architecture knows few limits. Given today's building materials of steel, cement, wood and stone, American architects continue to reach new boundaries, limited only by one's creativity with their building materials.
A Contemporary Design that expresses elegance and limitless boundaries. All materials provided by the Committee. Viewed from three sides.



AMERICAN BEAUTY...Timless, Newport, R.I.

Class 6A: (Classical) and 6B: (Modern) American Decorator...Ceaseless

Each side will be judged separately

Dorothy Tuckerman Draper was a descendent of the English family that helped to settle Newport; Tuckerman Avenue is named in honor of the Tuckerman family. Dorothy created a new decoration style known as "Modern Baroque," by adding a modern flare to a classical style. She was quoted saying "Never look back, except for an occasional glance, look ahead and plan for the future".

A **Two-Sided Design** representing the Draper quote that exemplifies her ceaseless energy. Staged on a pedestal painted Rosecliff White, 42" high by 24" square. Viewed from all sides.



AMERICAN BEAUTY...Timless, Newport, R.I. Class 11: American Wedding Gown...Peerless
In September of 1953, at Hammersmith Farm, a Victorian mansion and childhood home of Jacqueline Bouvier, the wedding of Jacqueline to John F. Kennedy was celebrated. Jackie Kennedy was known for her grace and refined elegant style.
 A **Cascade Design** of peerless style to celebrate Jackie Kennedy's wedding. Staged on a pedestal painted Rosecliff White 42" high with a 16" square top. Viewed from three sides.

summer 2015



AMERICAN BEAUTY...Timless, Newport, R.I. Class 13: American Wedding Cakes...Breathless
Many a Newport wedding has been graced with a beautiful creation by celebrity cake designer Sylvia Weinstock. Known as the Leonardo da Vinci of wedding cakes, she creates towering tiered cakes covered with sugar confections and butter cream.
 A design that incorporates the **Pavé Technique** inspired by the ever-creative cake designer Sylvia Weinstock that will leave any wedding guest breathless. Staged on a the Dining Room table of Rosecliff on a riser painted Rosecliff White, 5-5/8" high x 24" wide x 24" deep. Table will be covered with an off-white tablecloth. The riser may be enhanced/covered without damage to the staging. Viewed from all sides.

summer 2015



AMERICAN BEAUTY...Timless, Newport, R.I. Class 13: American Wedding Cakes...Breathless
Many a Newport wedding has been graced with a beautiful creation by celebrity cake designer Sylvia Weinstock. Known as the Leonardo da Vinci of wedding cakes, she creates towering tiered cakes covered with sugar confections and butter cream.

A design that incorporates the **Pavé Technique** inspired by the ever-creative cake designer Sylvia Weinstock that will leave any wedding guest breathless. Staged on a the Dining Room table of Rosecliff on a riser painted Rosecliff White, 5-5/8" high x 24" wide x 24" deep. Table will be covered with an off-white tablecloth. The riser may be enhanced/covered without damage to the staging. Viewed from



BEAUTIFUL BOTANICAL ARTS, JEWELRY & MORE

Photos ©MaryEllen J.M. O'Brien2015

Botanical Arts is becoming very popular in flower shows. Given the increased interest, Flower Show Flowers is expanding its' pages to highlight some wonderful examples from some recent shows. This edition is featuring Botanical Jewelry, Embellishment and Couture.

These Botanical Arts creations were constructed from all dried plant materials and then assembled and painted. The results are stunning. They may even leave you in disbelief that these are actually made from dried plant materials.

Botanical Embellishment

It is a craft class that enhances a man-made object with dried plant material that may be artificially treated. Total coverage of the object is not required.

Botanical Jewelry

Entries are constructed ornaments created from all dried plant materials that may be painted/ treated to resemble wearable jewelry.

Botanical Couture

Clothing or clothing accessories constructed from fresh plant materials for (Design Division) or with dried materials for (Botanical Arts Division) of a flower show.



FLORESCENCE - Illusions Flower Show, Houston, TX
Botanical Jewelry Class 1: Flights of Fancy

BLUE RIBBON

Create a brooch depicting a winged creature displayed on a black velvet mount.
Entry must not exceed the size of the mount. Viewed from all sides and above.



FLORESCENCE - Illusions Flower Show, Houston, TX
Botanical Jewelry Class 1: Flights of Fancy

Create a brooch depicting a winged creature displayed on a black velvet mount.
Entry must not exceed the size of the mount. Viewed from all sides and above.



FLORESCENCE - Illusions Flower Show, Houston, TX
Botanical Jewelry Class 1: Flights of Fancy

Create a brooch depicting a winged creature displayed on a black velvet mount.
Entry must not exceed the size of the mount. Viewed from all sides and above.



FLORESCENCE - Illusions Flower Show, Houston, TX
Botanical Jewelry Class 1: Flights of Fancy

Create a brooch depicting a winged creature displayed on a black velvet mount.
Entry must not exceed the size of the mount. Viewed from all sides and above.



FLORESCENCE - Illusions Flower Show - Houston, TX
Botanical Jewelry Class 2: Jewels du Jour

BLUE RIBBON

Create a pair of ear clips displayed on a black velvet mount. Entry must not exceed the size of the mount. Viewed from all sides and above.



FLORESCENCE - Illusions Flower Show - Houston, TX
Botanical Jewelry Class 2: Jewels du Jour

Create a pair of ear clips displayed on a black velvet mount. Entry must not exceed the size of the mount. Viewed from all sides and above.



FLORESCENCE - Illusions Flower Show - Houston, TX
Botanical Jewelry Class 2: Jewels du Jour

Create a pair of ear clips displayed on a black velvet mount. Entry must not exceed the size of the mount. Viewed from all sides and above.



FLORESCENCE - Illusions Flower Show - Houston, TX
Botanical Embellishment Class 3: Minaudiere
Embellish a supplied small wooden purse displayed on a black velvet mount. Entry must not exceed the size of the mount. Viewed from all sides and above.



FLORESCENCE - Illusions Flower Show - Houston, TX
Botanical Embellishment Class 3: Minaudiere
Embellish a supplied small wooden purse displayed on a black velvet mount. Entry must not exceed the size of the mount. Viewed from all sides and above.



FLORESCENCE - Illusions Flower Show - Houston, TX
 Botanical Embellishment Class 3: Minaudiere
 Embellish a supplied small wooden purse displayed on a black velvet mount. Entry must not exceed the size of the mount. Viewed from all sides and above.



FLORESCENCE - Illusions Flower Show - Houston, TX
 Botanical Embellishment Class 3: Minaudiere
 Embellish a supplied small wooden purse displayed on a black velvet mount. Entry must not exceed the size of the mount. Viewed from all sides and above.



FLORESCENCE - Illusions Flower Show - Houston, TX
 Botanical Embellishment Class 3: Minaudiere
 BLUE RIBBON
 Embellish a supplied small wooden purse displayed on a black velvet mount. Entry must not exceed the size of the mount. Viewed from all sides and above.



FLORESCENCE - Illusions Flower Show - Houston, TX
 Botanical Embellishment Class 3: Minaudiere
 Embellish a supplied small wooden purse displayed on a black velvet mount. Entry must not exceed the size of the mount. Viewed from all sides and above.



FLORESCENCE - Illusions Flower Show - Houston, TX
 Botanical Couture Class 4: Fairy Fashionable
 Using an array of natural elements create a fairy/fantasy couture gown on a miniature dress form supplied by the committee. Viewed from 3 sides.



FLORESCENCE - Illusions Flower Show - Houston, TX
 Botanical Couture Class 4: Fairy Fashionable
 Using an array of natural elements create a fairy/fantasy couture gown on a miniature dress form supplied by the committee. Viewed from 3 sides.

BLUE RIBBON



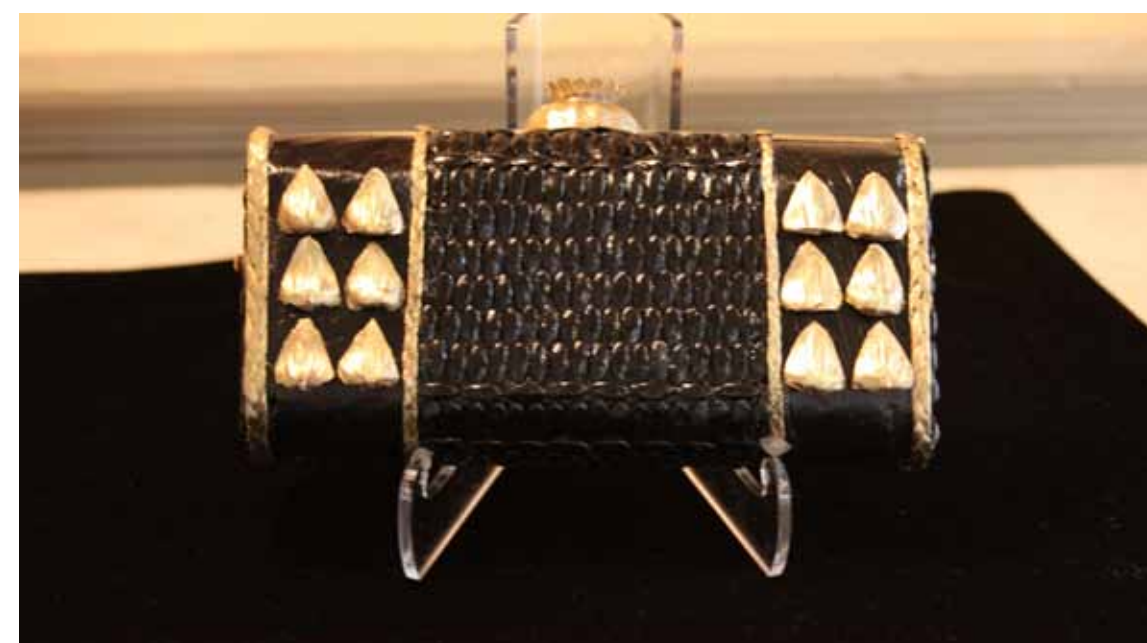
KALEIDOSCOPE Flower Show - Rochester, NY - GCA Annual Meeting 2015
 Botanical Jewelry Division IV Class 1: Multifaceted
 A necklace, displayed on a 15" h black velvet jewelers stand supplied by the committee after registration. Staged on a black shelf 45" from the floor. Viewed from three sides.



KALEIDOSCOPE Flower Show - Rochester, NY - GCA Annual Meeting 2015
 Botanical Jewelry Division IV Class 1: Multifaceted
 A necklace, displayed on a 15" h black velvet jewelers stand supplied by the committee after registration. Staged on a black shelf 45" from the floor. Viewed from three sides.



KALEIDOSCOPE Flower Show - Rochester, NY - GCA Annual Meeting 2015
 Botanical Jewelry Division IV Class 1: Multifaceted **BLUE RIBBON**
 A necklace, displayed on a 15" h black velvet jewelers stand supplied by the committee after registration. Staged on a black shelf 45" from the floor. Viewed from three sides.



AMERICAN BEAUTY, Timeless Flower Show - Newport, Rhode Island
 Botanical Embellishment Class 3: **STYLE...Ageless**
 (Top Picture) - **BLUE RIBBON**
Newport's favorite daughter, Jacqueline Bouvier Kennedy, is remembered for her chic wardrobe and stunning accessories. One such accessory was an evening purse given to her by Charles de Gaulle on the occasion of her 1963 visit to France. She treasured the gift and often carried the purse to elegant evening affairs, even after leaving the White House.
 A miniaudiere clutch made entirely of dried plant materials decorated in the iconic style of the First Lady. Staged on a commode 48-3/8" wide x 15-5/8" deep topped with black velvet and positioned on a plexiglass stand supplied by the Committee. A photo of the commode will be sent to the Exhibitors. Viewed from the front.



AMERICAN BEAUTY...Timeless Flower Show - Newport, R.I.
Botanical Embellishment Class 3: STYLE...Ageless



AMERICAN BEAUTY...Timeless Flower Show - Newport, R.I.
Botanical Embellishment Class 3: STYLE...Ageless



AMERICAN BEAUTY... Timeless Flower Show - Newport, R.I.
Botanical Jewelry Class 2: NECKLACE...Flawless

Doris Duke was born into untold fortune as the only child of tobacco tycoon James Buchanan Duke. Doris lived life to the fullest in every way possible, summering in Newport at her mansion Rough Point. She is best remembered as a philanthropist and collector.

A necklace of great importance, flawless and beautiful, created from dried plant materials. Staged on a form supplied by the Committee and positioned on a pedestal. Viewed from three sides.



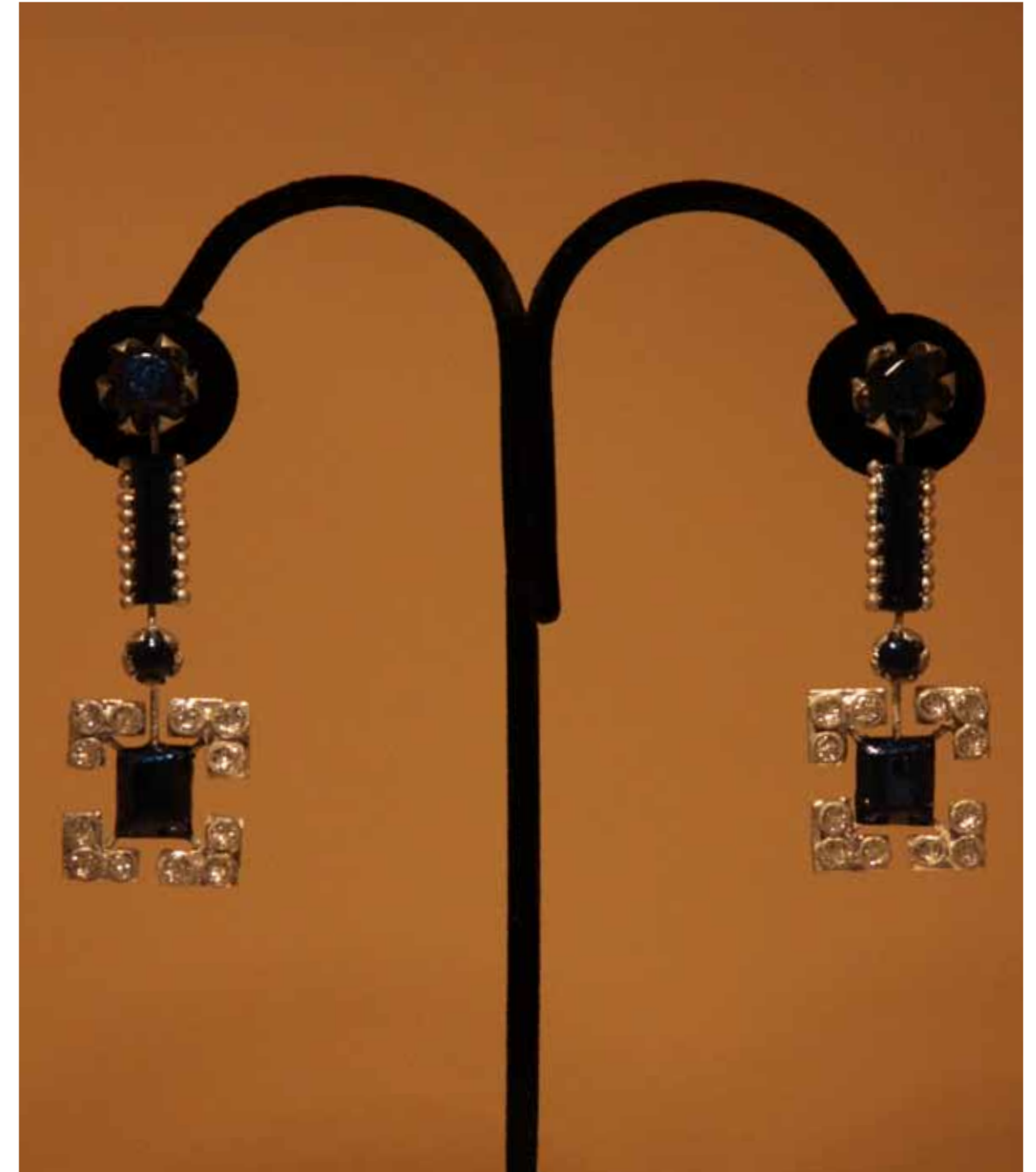
AMERICAN BEAUTY... Timeless Flower Show - Newport, R.I.
Botanical Jewelry Class 2: NECKLACE...Flawless



AMERICAN BEAUTY... Timeless Flower Show - Newport, R.I.
Botanical Jewelry Class 2: NECKLACE...Flawless



AMERICAN BEAUTY... Timeless Flower Show - Newport, R.I.
Botanical Jewelry Class 2: NECKLACE...Flawless



AMERICAN BEAUTY... Timeless Flower Show - Newport, R.I.
Botanical Jewelry Class 3: STYLE...Ageless

In the summer of 1913 Mrs. Arthur Curtiss James invited Newport Society to a Masque in celebration of the completion of her extraordinary Blue Garden designed by the Olmsted Brothers. This gorgeous party was the highlight of the Newport social season. The jewels worn may have rivaled the beauty of the garden!

A pair of earrings inspired by the varied and intricate design of the Blue Garden. Staged on a T-shaped velvet earring stand supplied by the Committee and staged in a niche that will be lighted from above and painted Rosecliff White. Viewed from the front.



AMERICAN BEAUTY... Timeless Flower Show - Newport, R.I.
Botanical Jewelry Class 3: STYLE...Ageless



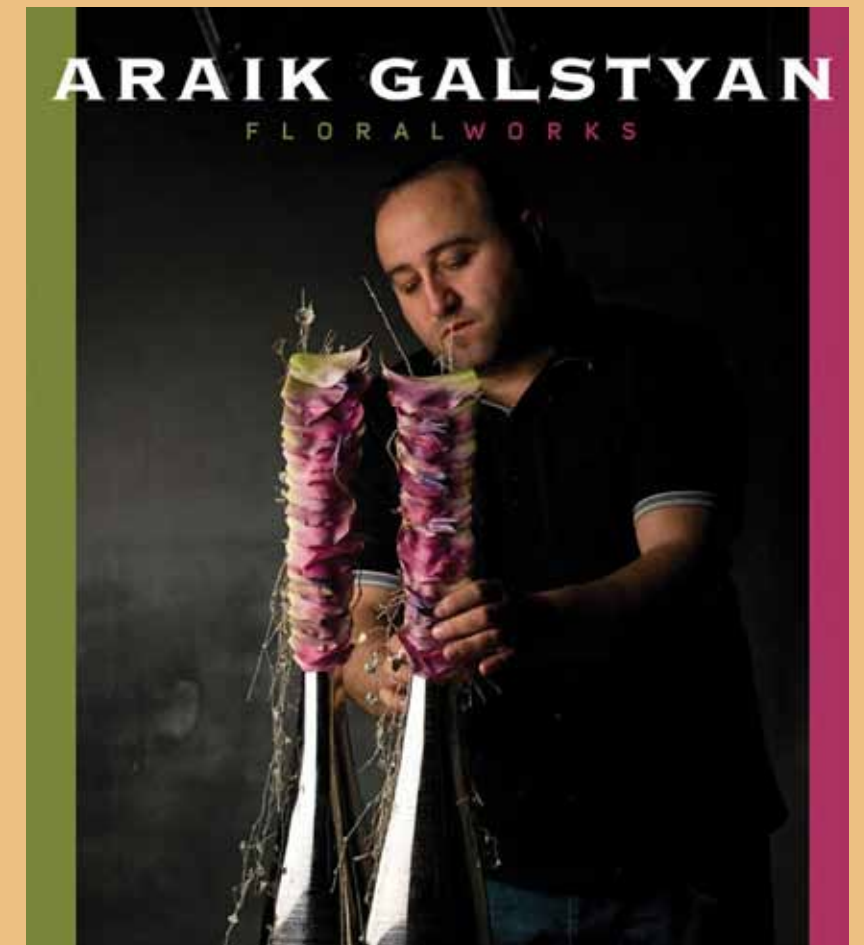
AMERICAN BEAUTY... Timeless Flower Show - Newport, R.I.
Botanical Jewelry Class 3: STYLE...Ageless



AMERICAN BEAUTY... Timeless Flower Show - Newport, R.I.
Botanical Jewelry Class 3: STYLE...Ageless

LEAFING *through*

Floral Design Books



ARAİK GALSTYAN:
FESTIVE FLORAL DESIGNS
By: Araik Galstyan

Available: August 10, 2015

Pre-Orders accepted

Hardcover – Available on August 10, 2015

Cost: Under \$55.00

Orders may be placed for this book through Amazon.com fulfillment. This book looks to be a **MUST HAVE** for your floral design library.

<http://www.amazon.com/Araik-Galstyan-Festive-Designs-English/dp/9058564975>

AUGUST

8-9, 2015 - RAINWATER...Weather or Not! Sponsored by The Lenox Garden Club and The Berkshire Botanical Garden. The show will be held at the Berkshire Botanical Garden Exhibition Hall. Saturday 12noon - 5pm and Sunday 10am - 5pm
Berkshire Botanic Garden
corner of Rt 183 and Rt 102
Stockbridge, MA 01262

22 - 23, 2015

Ikenobo Ikebana Chicago Chapter Show Saturday and Sunday, August 22 - 23, 2015 10 a.m. - 4:30 p.m.
Ikebana, the Japanese art of flower arranging, originated with Ikenobo in Kyoto, Japan, as a Buddhist floral offering. This show is presented by the Ikenobo Ikebana Society, Chicago Chapter, and will feature arrangements from members who will be on hand to answer questions about Ikenobo.
Chicago Botanic Garden
1000 Lake Cook Road
Glencoe, IL 60022

SEPTEMBER

24 - 25, 2015 ONE HUNDRED YEARS AND BLOOMING. Presented by the Rye Garden Club Thursday, September 24th 3 pm - 5 pm
Friday, September 25th 10 am - 3 pm
Show is open to the public - No Admission Charge. The Apawamis Club Rye, New York

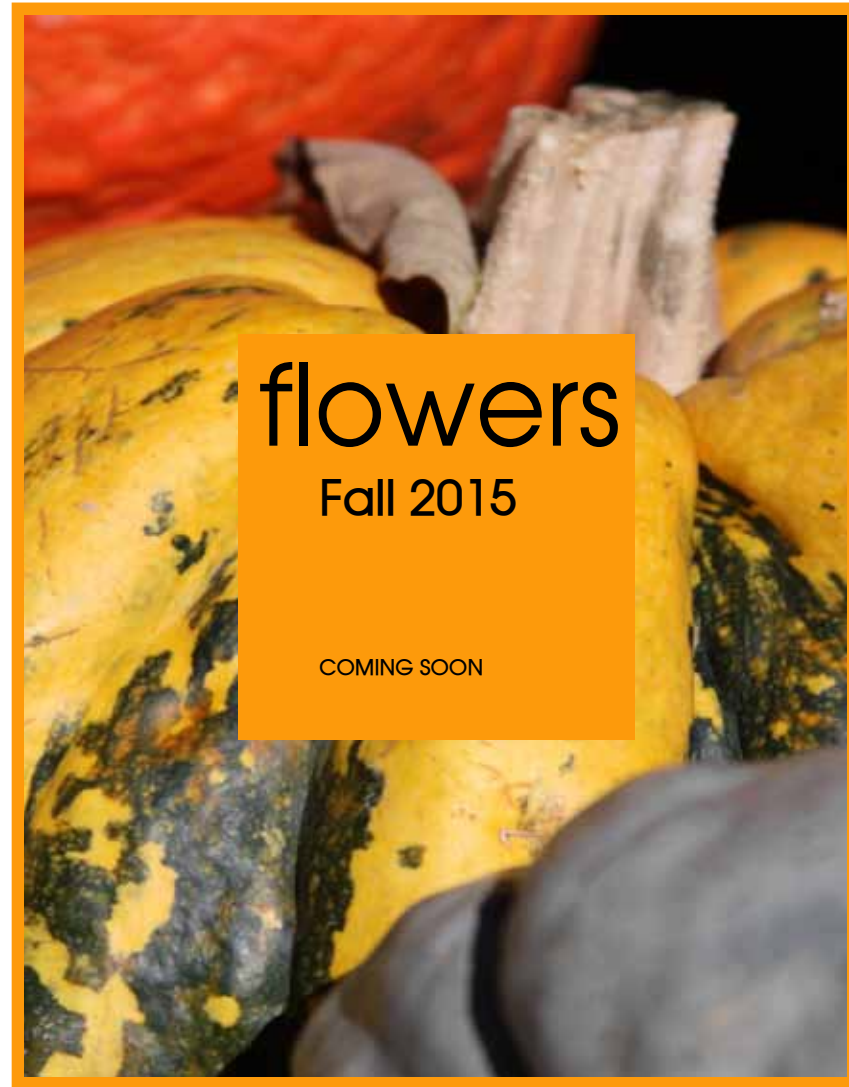
OCTOBER

16-18, 2015
Ikebana Show
The Boston Chapter of the Ikebana International Society presents its biennial exhibition of traditional Japanese flower arranging. This event features many educational opportunities to learn about the mechanics and techniques of ikebana.
Tower Hill Botanic Garden
11 French Drive
Boylston, MA 01505.0598

Get your show posted:

Sent information of your flower show to-
FlowerShowFlowers@hotmail.com
Subject Line: Flower Show Info







FLOWER SHOW

flowers

Volume II

Number 3

SUMMER 2015

