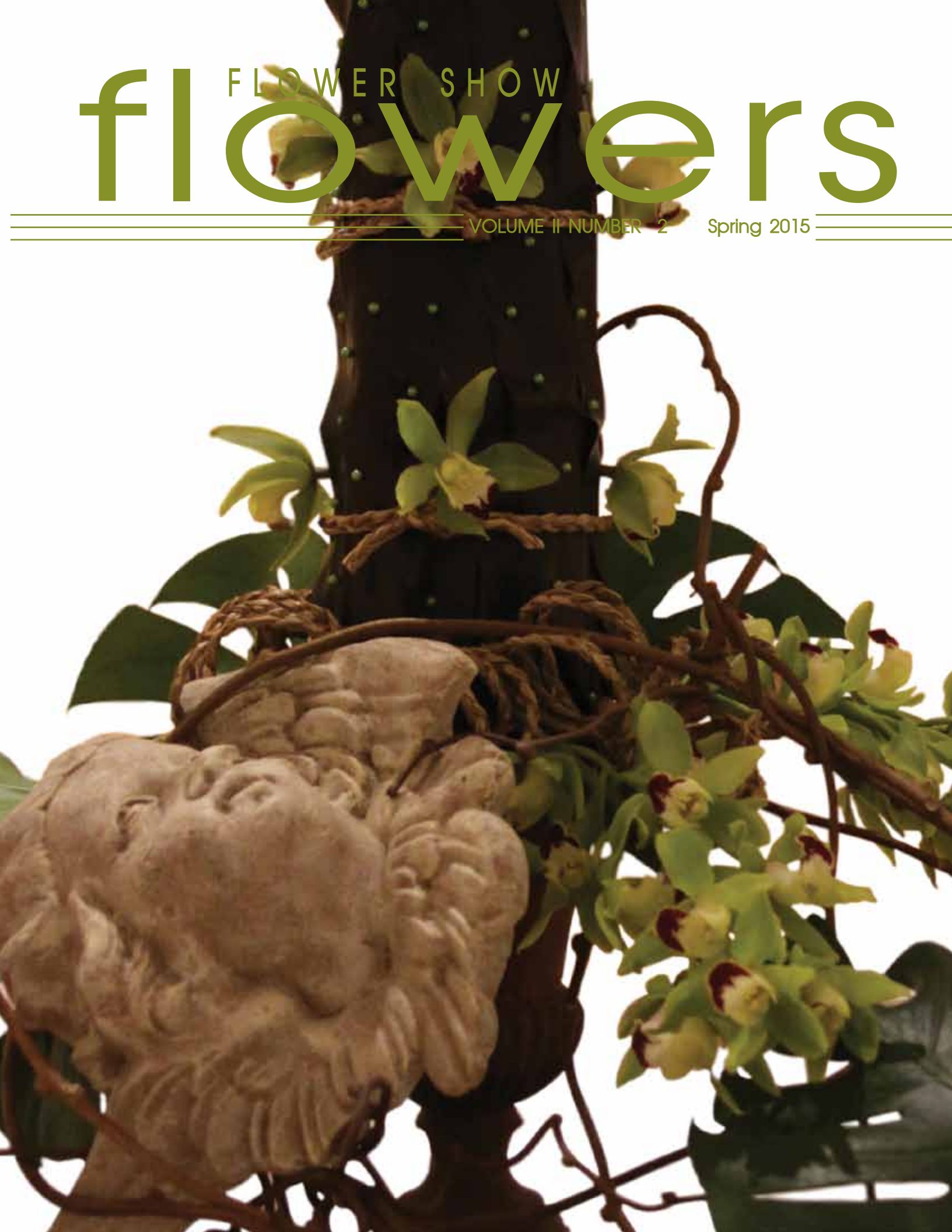
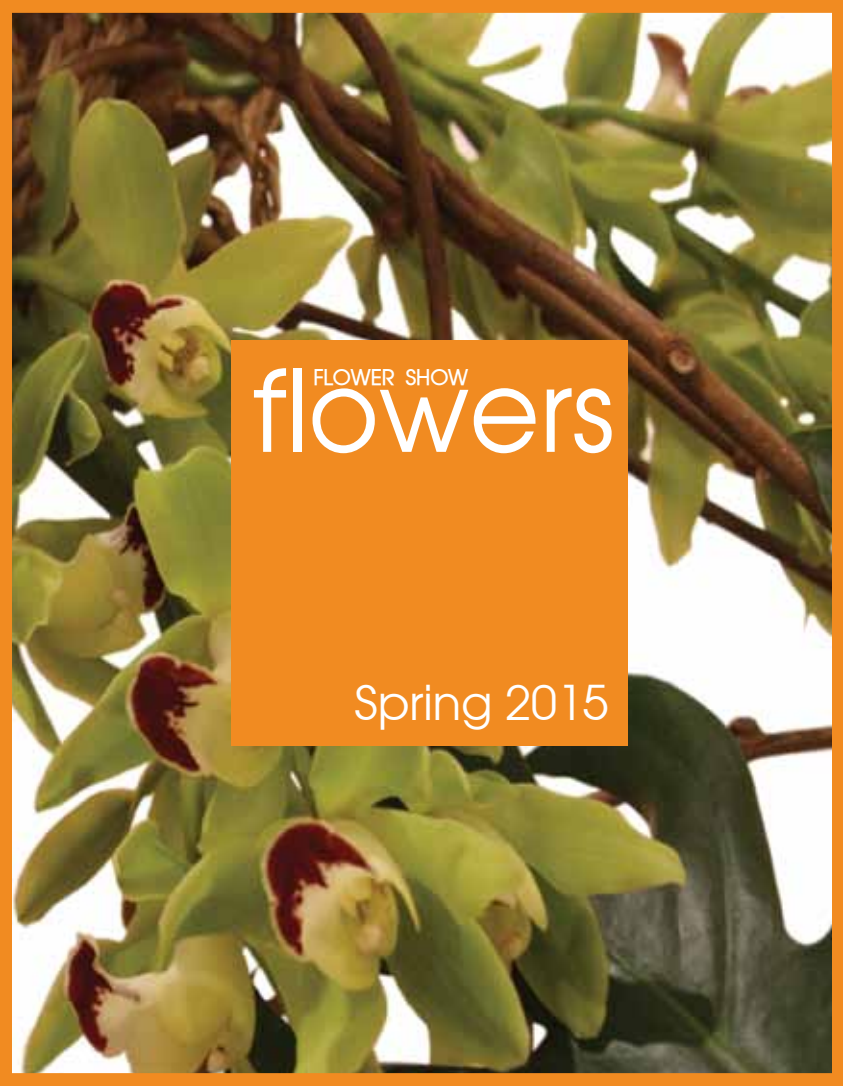


FLOWER SHOW flowers

VOLUME II NUMBER 2 Spring 2015





Departments

- 4. DEAR FRIENDS
- 32. MARKETPLACE
- 52. BY DEFINITION
- 55. FLOWER SHOW RECIPES
- 78. SAVE THE DATE
- 79. BUDDING STORIES



Spring 2015

Volume II Number 2

Features

- 5. FLORA IN WINTER 2015
*The Worcester Art Museum Flower Show
Worcester, Massachusetts*
- 23. ENTWINED
*Over and under, woven, tangled or twined...
flower stems are reaching new positions*
- 33. I CAN SEE CLEARLY NOW
Underwater designs
- 38. MORE MODERN MASS
Created with Supermarket products
- 43. IKEBANA for the season...Spring
Freeform
- 53. BEAU.TANICAL BOTANICALS
Golden Crane flies for Hanami
- 57. THE DECORATED WREATH
Greet your guest with a Springtime Wreath
- 67. THE BEST OF TIMES
Centennial Celebration Flower Show

Dear Friends,

Flora in Winter was the opening salvo here in New England against the long, cold days of Winter. On January 29th, with temperatures hovering in the single digits, the Worcester Art Museum opened its' doors to bundles of flowers that were transformed into interpretive floral designs for their art collection. Ancient art to contemporary paintings were the subject for these floral sculptures. It was cold outside, but inside the flowers bloomed giving hope to an early Springtime.

Many a flower show has happened since then. In Beau-tanical/Botanicals here in FLOWER SHOW flowers, a Blue Ribbon winner is featured. An embellished fan for the HANAMI Flower Show that was sponsored by Green Fingers Garden Club of Greenwich, CT is pictured with how-to instructions and pictures as guides.

Over and under...flower stems are reaching new positions in their designs...Entwined will offer you some ideas on weaving your floral stems and grasses into your designs. Hints on materials that will work best for your next design.

Be sure to check out all the stories including...More Modern Mass, I Can See Clearly Now (a look at Underwater Designs) with tips on keepings your water sparkling clear and all the usual columns here at Flower Show Flowers.

MaryEllen O'Brien
Editor

FLORA *in* Winter 2015

January 29 - February 1

Worcester Art Museum
Worcester, Massachusetts
Photos ©2015 MaryEllen O'Brien





MaryEllen O'Brien
Editor

Layout & Design
MaryEllen O'Brien

FLOWER SHOW flowers
Copyright © 2015
by Editor: MaryEllen O'Brien

All rights reserved. No part of this publication may be reproduced, distributed, or transmitted in any form or by any means, including photocopying, recording, or other electronic or mechanical methods, without the prior written permission of the magazine editor, except in the case of brief quotations embodied in critical reviews and certain other noncommercial uses permitted by copyright law. To request permission to reprint an article or photo, please email:

FlowerShowFlowers@hotmail.com

Subject Line:

Permission Request For Article/Photo Reprint

FLOWERSHOWflowers.com

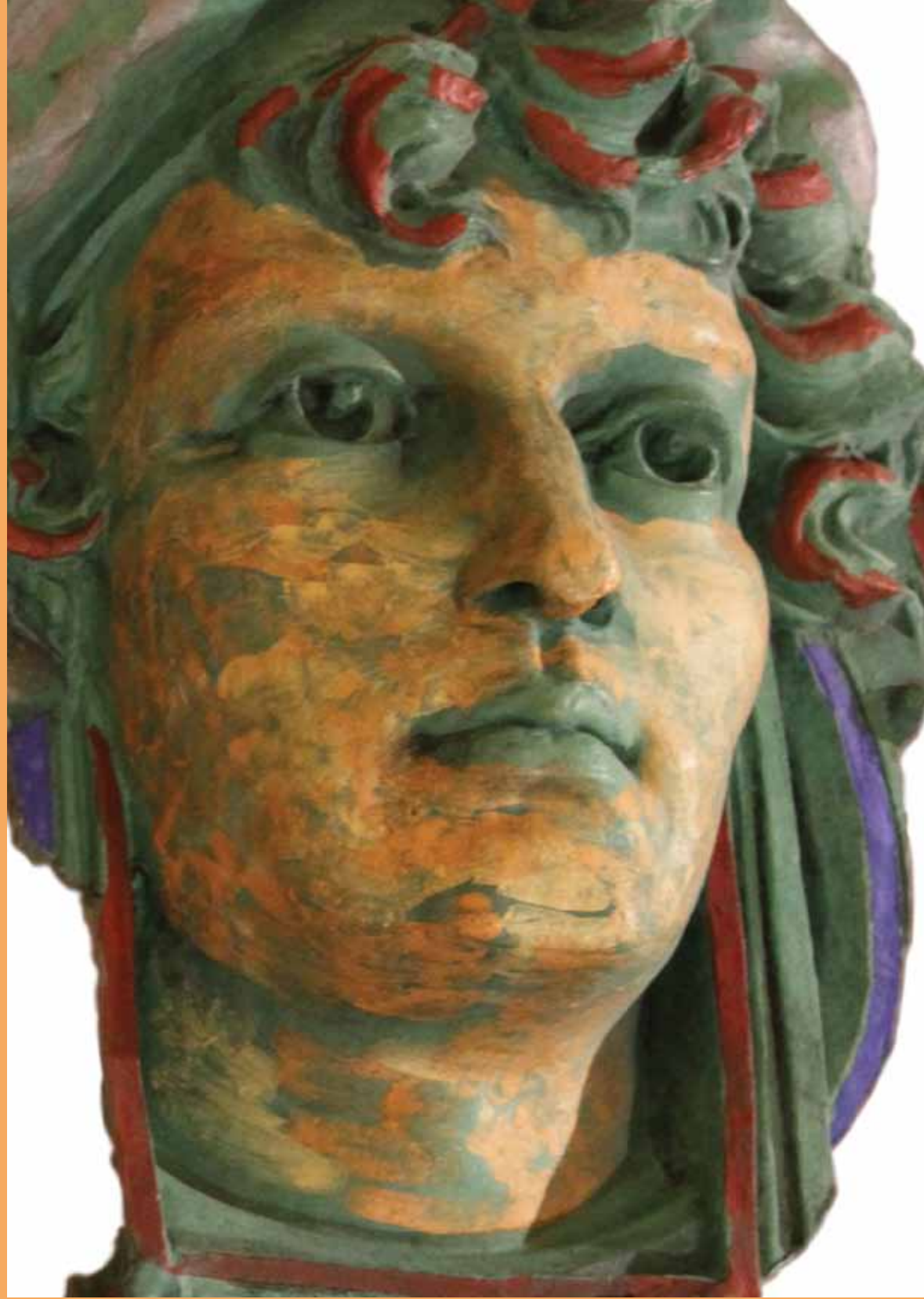
FLORA *in* Winter 2015

January 29 - February 1

In the early morning hours of January 29th, with temps lingering in the single digits, floral designers arrived with their flowers covered in bags and boxes to protect them from the freezing temperatures. Flowers exposed to these temps would freeze within seconds and succumb to the elements.

Cold weather outside did not curb the enthusiasm inside. Museum staffers worked with the designers escorting them and their materials to their chosen artwork. Everyone was smiling and happy to be surrounded by springtime inside even though the calendar said otherwise. Each room in the museum held a floral design that interpreted a painting, sculpture or precious object. The event was a "January Thaw" to a very cold New England winter.

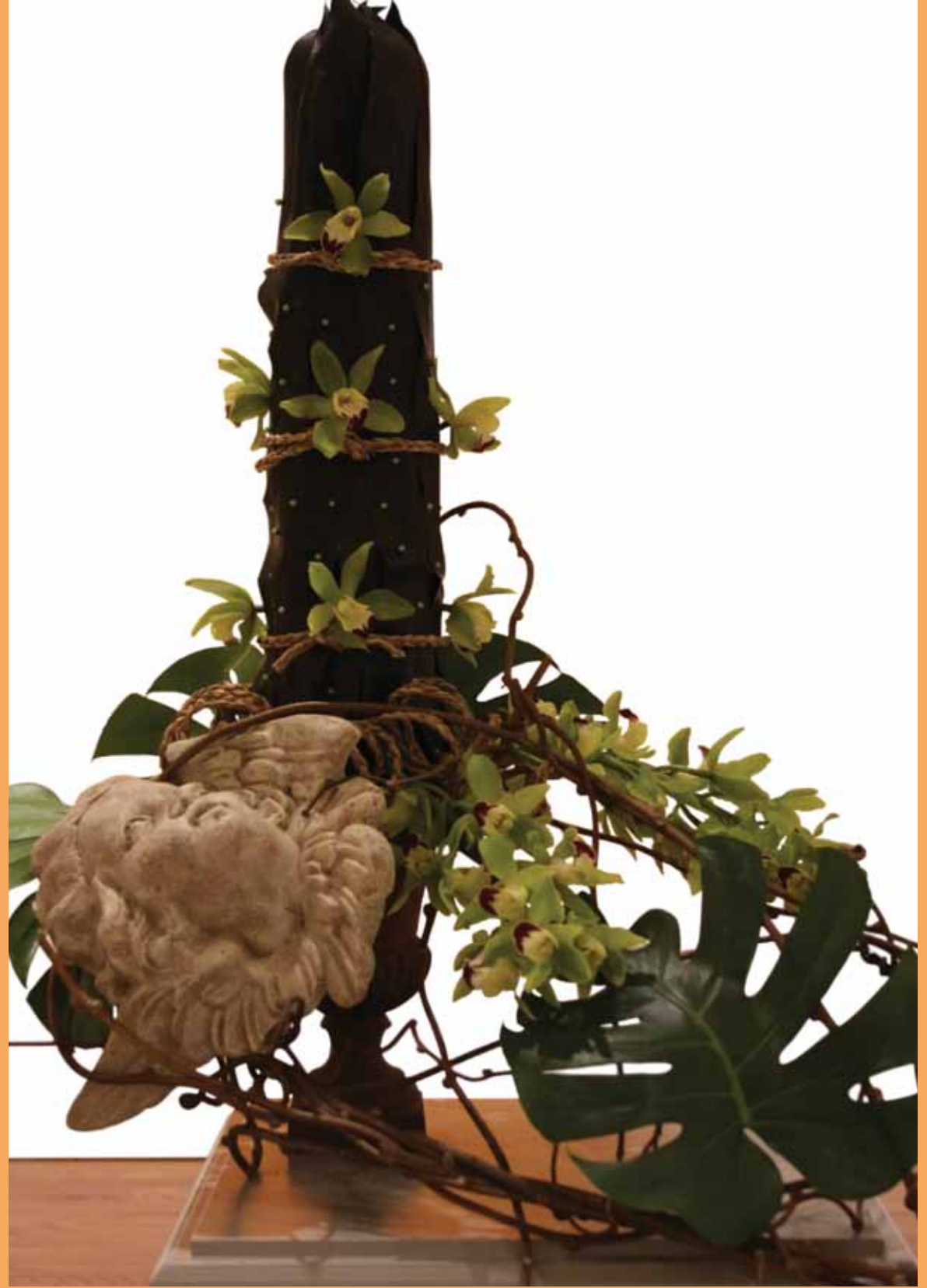
FLORA IN WINTER 2015



Close up of a Nancy Graves sculpture.

WORCESTER ART MUSEUM

WORCESTER, MASSACHUSETTS



Floral design to complement the Nancy Graves sculpture. Design includes Aspidistra leaves, Cymbidium Orchids, Kiwi Vine Stems, and Monstera leaves.

FLORA IN WINTER 2015

FLORA IN WINTER 2015



Inverted double bowls act as the base and container for this design. Plant materials include: Palm foliage, Galax leaves, Amaryllis, Lotus buds, and Dianthus (Green Trick Carnations).

WORCESTER ART MUSEUM

WORCESTER, MASSACHUSETTS



Rhythmic branches lend interest and mimic the painting. Plant materials include: Cymbidium Orchids, Ming Fern, Hypericum berries, and Mimosa blooms.

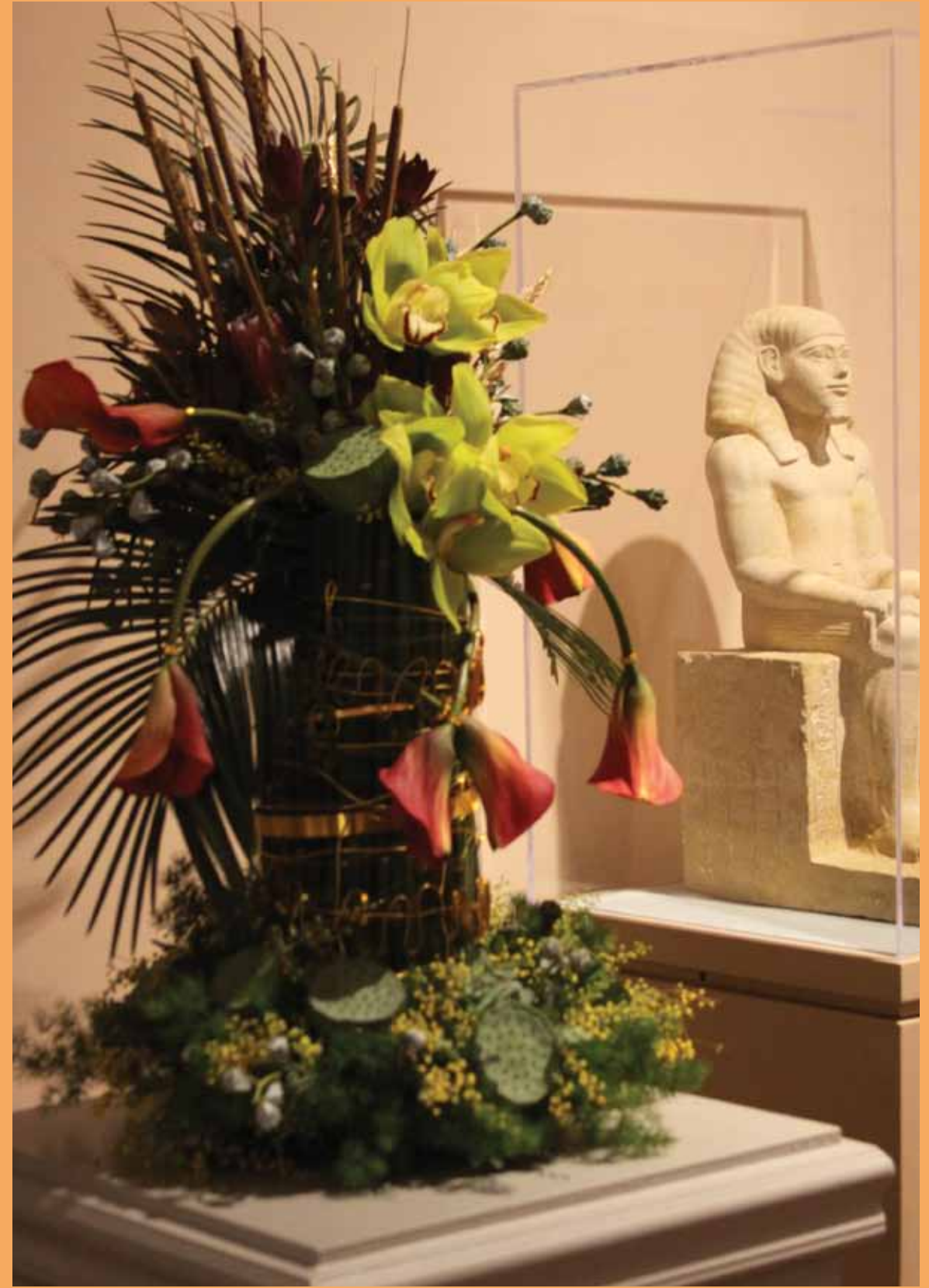
FLORA IN WINTER 2015

FLORA IN WINTER 2015



WORCESTER ART MUSEUM

WORCESTER, MASSACHUSETTS



Sago Palm fronds, Lotus pods, Mimosa blooms, Calla Lilies, Eucalyptus seed pods and Ming Fern are used to create this regal design fit for an Egyptian King. Note the front view of this design in the photo to the left.

FLORA IN WINTER 2015

FLORA IN WINTER 2015



Calla Lilies, Variegated Aspidistra leaves, Galax leaves and white buds or pods... perhaps from the Leucadendron family comprise this design.

WORCESTER ART MUSEUM

WORCESTER, MASSACHUSETTS



Calla Lilies, Roses, Gladiolus, Eucalyptus and Bear Grass swirl for this design.

FLORA IN WINTER 2015

FLORA IN WINTER 2015



For this painting Roses, Pincushion Protea, Leucadendron, and Artemisia capture the essence of the Fish Market.

WORCESTER ART MUSEUM

WORCESTER, MASSACHUSETTS



The inviting warm colors of Roses, Carnations, Waxflowers and Flax keep the viewer interested in this design.

FLORA IN WINTER 2015

FLORA IN WINTER 2015



WORCESTER, MASSACHUSETTS



Two containers to represent the two paintings are skillfully combined with Roses, Larkspur, Pincushion Proteas, Callas and so much more. Even the vases represent the fabric of the clothing in this clever interpretation.

FLORA IN WINTER 2015

FLORA IN WINTER 2015



A close up of the Larkspur and Roses from the floral design on previous page.

WORCESTER ART MUSEUM WORCESTER, MASSACHUSETTS



Here a Monochromatic design of whites is achieved with the use of Roses, Dendrobium Orchids, Calla Lilies, Tulips, Sweet Pea blooms and Freesia...Not only beautiful but fragrant too.

FLORA IN WINTER 2015



Calla Lilies, Ti leaves, Cordyline foliage, Wax Flowers, Fern fronds, Artemisia and Eryngium are used to create this warm and inviting design.

Entwined



MaryEllen O'Brien
Photos © MaryEllen O'Brien 2015

Over and under, woven, tangled or twined...flower stems are reaching new positions in their designs. Simple cross member construction adds stability to this technique and allows stems to be woven into any design.

Some stems work better than others; so choose wisely. Stiff rigid stems or jointed stems of carnations will refuse to be manipulated in this manner without breaking. Tulips, Calla Lilies, Rannunculus, Dendrobiums, and Anthuriums are pliable for the task. Experimentation may add to your list.

Structures can be made from twigs of curly willow, red twig dogwood and other osiers. Simply tie the cross members in place with covered wire and neatly trim the ends away. Once the structure is built...begin placing your stems. Weave some and place others normally.



Plant List:

Anthurium
Asparagus
Aspidistra leaves
Craspedia
Curly Willow branches
Green Trick Carnations
Pincushion Protea
Small Yellow/Orange/Red Peppers
Tulips

Supply List:

Low Long Vase
2 block wet Floral Foam
Long Toothpicks/Skewers
Polished Black Stones

1. Toothpicks are placed into the ends of the Asparagus and then positioned into the wet floral foam.
2. Pierce the peppers with the long toothpicks and poke into the Asparagus stalks to create a grid work from one stalk to the next. See picture above.
3. Add Curly Willow to add more dimension to the grid work.
4. Place tulips into the design weaving in and out of the toothpick grid work.
5. Spilt and twist the Aspidistra to add to the entwined look of the plant materials.
6. Finish by adding the remaining plant materials.
7. Tuck in any loose tulips leaves to accent the curves of the design.
8. Top the wet floral foam with the polished black stones and add water covering the stones.





Plant List:

Anthurium Foliage
Asparagus Stalks
Carnations
Craspedia
Dried Lotus Seed Pods
Mini Yellow Peppers
Tulips

Supply List:

Midellino
Vase with Water Tubes

1. Secure the glass test tube vases to the container with "Cling" Floral Adhesive or other floral glue. Add water to the tubes.
2. Add water to glass tubes.
3. Begin weaving the Midellino in and around the wooden sticks and test tubes for the desired effect. Mini Peppers may be pierced with the Midellino and brought to the center of the reed or kept at the ends of multiple reeds and allowed to hang down.
4. Begin placing tulips into the design curving their stems under the Midellino to duplicate the curves of the reed.
5. Fill in with the rest of the floral materials.
6. Check all water levels and fill as needed.





Plant List:

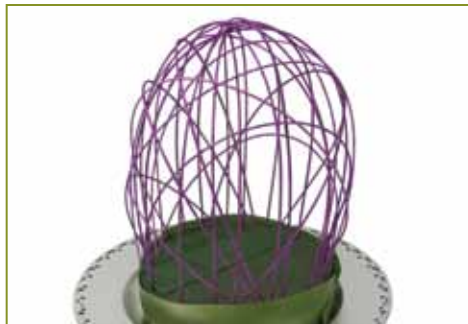
Tulips
Dianthus (Green trick Carnation)
Small Leafed foliage

Supply List:

Floral Foam
Vase
Midellino Reed

1. Place the wet floral foam into the container and leave about one inch above the edge of the container.
2. Practice placing a single piece of Midellino to form the proper sized arc for your design. When the correct size is determined...Cut a small bundle to the proper length.
3. Place reed into the foam to create a series of rounding shapes down the length of the wet floral foam.
4. Add Tulips next. Weave into the reed to help them keep their rounded placements.
5. Finish by covering the exposed floral foam with the green Dianthus and other foliage if desired.
6. For fun (above pic) an Easter Egg is hidden under the canopy.



**Plant List:**

Tulips
Freesia
Calla Lilies
Aspidistra foliage

Supply List:

Plate
Floral Foam
Midellino Reed
Stones or polished glass chips

1. Slice the wet floral foam in half lengthwise and trim round to fit the plate. Cover the outer edge with a split Aspidistra leaves.
2. Begin building the cage with Midellino sticks.
3. Add flowers, weaving them into the structure. Place stones into the inside hiding the floral foam.



MARKETPLACE

Interesting Floral Products
SHAKER SIPHON



The Must Have Tool for Underwater Floral Designers

Clean up is never easy nor is it fun. But this Shaker Siphon certainly does take away some of the problems cleaning up your Underwater Floral design presents...the water removal.

It's never an easy task if your glass vase is large and heavy. Transporting your design to a sink will inevitable result is splashing and spillage. This neat little hose is a sure cure for the problem. The end of the hose has a brass fitting that when placed into the water and shaken will neatly remove the water from your design...Just make sure that you have an empty bucket ready to fill with the water that will be siphoned from the vase.

Clean up will be a breeze with this tool. A real must have for your tool kit. Currently available on line from Amazon starting at \$10.00.



I can see clearly now!
Quick Tips for Underwater Floral Designs

MaryEllen O'Brien
Photos © MaryEllen O'Brien 2015

WATER TIPS

Use tap water with a small amount of bleach to keep water sparkling. Distilled water works nicely too. No bleach needed since minerals have been removed from the water.

PLANT TIPS

Use sturdy plant materials that may have a waxy surface. Tropical flowers and foliage work nicely. Wipe flowers and foliage with a damp paper towel to remove any dirt and dust before placing into your design. Unwanted dirt will cloud your water and promote bacteria growth.

CONSIDER THESE FLOWERS/FOLIAGE

Anthuriums
Calathea
Cymbidium Orchids
Echeveria
Ginger
Heliconia
Leucadendron
Mokara Orchids
Protea

FRUIT/VEGGIES

Apples
Citrus Fruits
Peppers
Squash
and so much more...
Experiment!

Interest is created with magnification of the Apple and Philodendron leaf in the water filled vase.

Spring 2015

Spring 2015



Here Echeveria and Anthurium flowers and foliage are used. Some plant materials totally submerged while others are not. Fiber sticks add color and vertical stability to the design.



In these two underwater designs patterned paper is used to add interest. On the left paper is attached to the back and in this design paper is placed inside a second glass container. Magnification and distortion is achieved adding an unexpected element to the design.



Tulips, Kumquats, Dried Lotus Pods and Roses

MORE MODERN MASS

FEATURING
FRUITS,
VEGGIES, &
SUPERMARKET
FLOWERS

MaryEllen O'Brien
Photos © MaryEllen O'Brien 2015



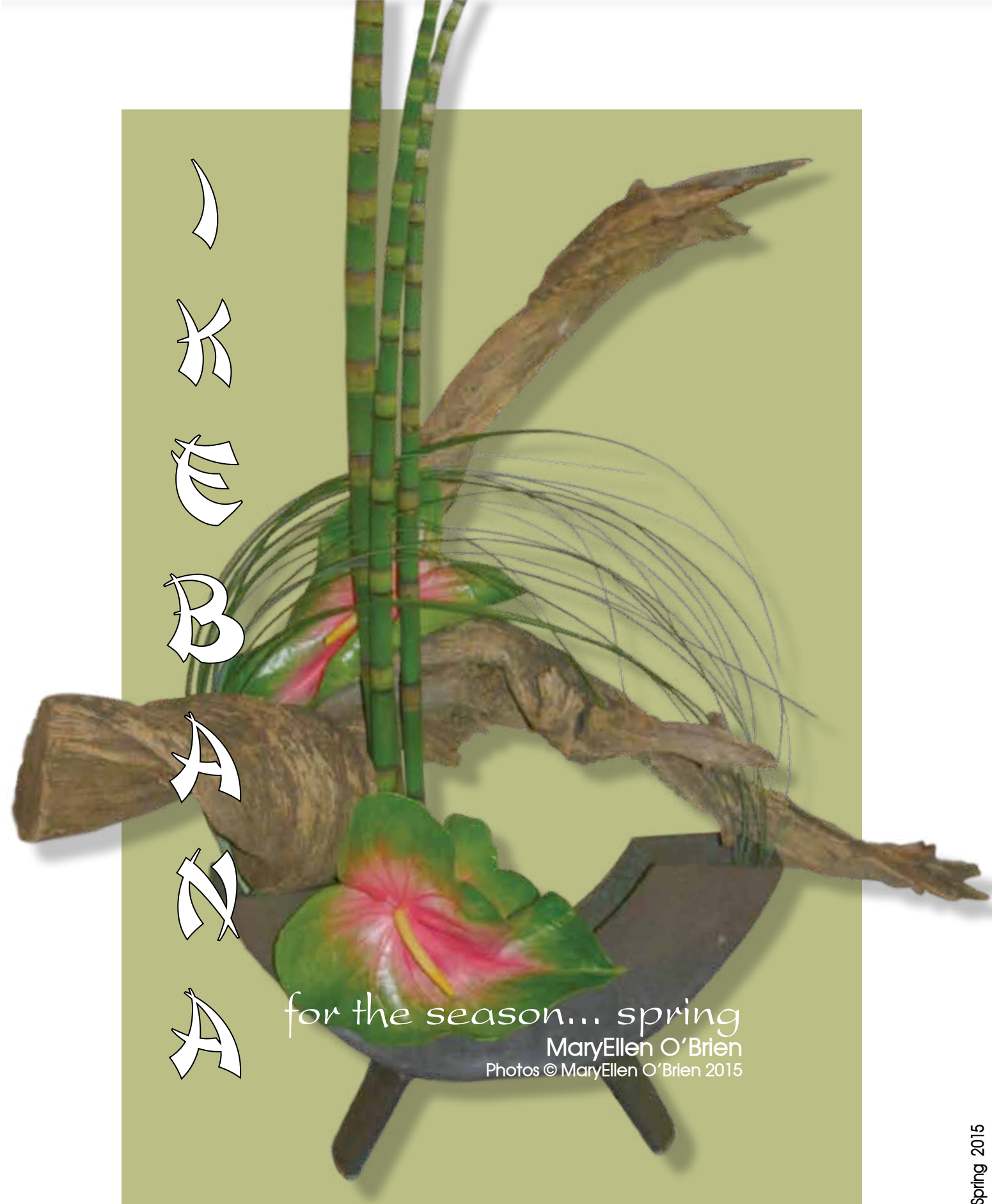
Midellino Reed, Lotus Pods, Roses, Gerbera Daisies and Kumquats



Red Potatoes, Peach Roses, Orange Roses and Aspidistra foliage



Italian Green Peppers, Carnations, Pom Pom Mums, Roses and Brussels Sprouts



Anthurium cv., Equisetum hyemale and Bear Grass (Xerophyllum tenax)



Iris (Iris X hollandica) and Cast Iron Plant (Aspidistra elatior)



Rose (Rosa cv.) and Bay Leaf (Laurus nobilis)



Iris (*Iris X hollandica*) and Cast Iron Plant (*Aspidistra elatior*)



Cast Iron Plant (*Aspidistra elatior*) and Roses (*Rosa* cv.)



Alocasia cv. 'Polly', Heliconia psittacorum x H. spathocircinata 'Alan Carle'



Beehive Ginger (Zingiber spectabile 'Singapore Gold'), Calathea insignis foliage and Equisetum hyemale



Iris (Iris X hollandica) shoot out of this vase with the side opening like a fireworks display.

ASSEMBLAGE

Assemblage Floral Design
A three-dimensional abstract design of plant material and other components.



This Assemblage design was created with stainless steel parts which were welded together. A single Anthurium and Ric Rac Cactus (*Selenicereus anthonyanus*) to create a striking design through the use of color and a prominent focal point.

Spring 2015

Beau•tanical / Botanical Arts

MaryEllen O'Brien
Photos © MaryEllen O'Brien 2015



A Golden CRANE flies for HANAMI



Class: Senu
Embellish a solid black silk folding hand fan with all dried plant material. Displayed on an individual stand. Viewed from 40" high.

Spring 2015



Preview of Spring 2015
Presented by Greenwich Garden Club
Greenwich, Connecticut

HANAMI

Celebrating The Transient Beauty Of Flowers

Class 5 **SENSU** 6 Entries

Embellish a solid black silk folding hand fan with all dried plant material. To be displayed on an individual stand on a black draped table approximately 40" high. Exhibitor may choose display position on stand and may alter fan in any way. Exhibitors will receive fan and stand upon registration confirmation. Accessories permitted.

PLANT LIST:

Oleander leaves (Nerium oleander)
Pea (Pisum sativum)

SUPPLY LIST:

White Craft Paper
Wax Paper
Glue
Gold Spray Paint

After reading Green Finger's Garden Club's Flower Show Schedule I became intrigued with the idea of embellishing a silk fan. The arcing curve of the fan inspired me to put a bird on the fan and what is more appropriate on a Japanese fan than a crane. In Japan, the crane or tsuru, is a national treasure. It is the symbol of longevity and good luck because it was thought to have a life span of a thousand years. So a Crane it was to be.

I first began by drying hundreds of Oleander leaves (Nerium oleander) to make sure that I had the best dried leaves possible for my entry.

After the leaves were dry, I made my sketch of the crane on white paper. I placed waxed paper over it and began gluing the leaves together on top of the wax paper. I was careful to use the largest leaves for the tail, medium size leaves for the wings and the smallest, most delicate ones for the head and neck. This process took several weeks to complete. I worked in small areas and made sure that the glue dried after each work session. A dried Split Pea (Pisum sativum) was used for the eye. After all the pieces were assembled, three coats of gold spray paint was applied. The contrast of the black silk and the 24 karat gold spray paint was quite striking...so much so, I decided that I would not add a planned on round red disc to represent the sun.

The golden bird was attached to the opened fan with glue and allowed to dry over night and then was ready to be packaged and mailed. The Golden Crane fan captured a Blue Ribbon at the show.

fsf recipes

to Condition Your Flowers



BABY'S BREATH (GYPSOPHILA) - Add a few drops of bleach to the water to keep fresh.

BALLON FLOWER (PLATYCODON) - Sear cut ends with a flame and place in cool water.

BAPTISIA – dip cut end in boiling water for several seconds and place in cool water.

BACHELOR BUTTONS – Cut flowers in full bloom. Place in warm water for 4-6 hours.

BEE BALM (MONARDA) - Place cut stems in warm water.

BEGONIA (RIEGER) – Split end and place in room temp water.

BELLS OF IRELAND (MOLUCELLA) - Remove all leaves, cut on an angle and place in warm water.

BLUE LACE FLOWERS – Cut flowers before they reach full bloom. Condition in warm water overnight.

BUTTERFLY BUSH (BUDDERIA) - Condition in very warm water...repeat as needed.

fsf recipes

to Condition Your Flowers

CALADIUM - Cut underwater, add wire support to stem if needed, and place in very warm water if necessary.

CAMELLIA - Hammer woody stem at the base and place in warm water.

CAMPANULA - Cut stem underwater and place in warm water to harden off. Remove past flower to encourage new buds to open.

CANTEBURY BELLS - (Campanula) Sear cut end with a flame and place in warm water.

CARNATION - Cut stem between the nodes and place in warm water to allow it to open fully.

CHRYSANTHEMUM - Remove most foliage. Break stems ends and place in room temperature water to harden off.

CLEMATIS - Sear the ends of the stems, allow to stand in warm water 2-3 hours and do not allow petals to get wet.

COLEUS - Dip stems in hot water for several seconds. Place immediately into room temperature water over night.



The Pansies are in Bloom

The Decorated **WREATH**

Featuring Springtime Designs



MaryEllen O'Brien
Photos © MaryEllen O'Brien 2015

Thinking about Spring and what do you imagine? I think about Spring flowers...Pansies, Lilies of the Valley, Ranunculus and Peonies. I also think about gardening...Seed Packets, Watering Cans, Hoses and garden implements.

In early Spring I prune the Apple Trees which gives me plenty of twigs to make wreaths from. Twiggy wreaths are made in the forms of hearts, circles and ovals. Add your favorite things to the wreaths to make your own statement of Spring. Use silk flowers and dried materials such as Lotus Pods, Fungi and preserved Mosses for long lasting wreaths. Use fresh flowers in your wreath for designs that will have a short life span for special occasions and holidays.

Welcome guests as you welcome the season.



Design by: The Decorated Wreath



Design by: The Decorated Wreath



Design by: The Decorated Wreath



Design by: The Decorated Wreath



Design by: The Decorated Wreath



Design by: The Decorated Wreath



Design by: The Decorated Wreath



Design by: The Decorated Wreath

The Best of Times



*The Fairfield Garden Club
1915-2015
Fairfield, Connecticut*



Anthuriums, Dendrobium Orchids, Calla Lilies, Carnations, Alocasia, Hala and Midellino Reed



Manipulated red wires and Gloriosa Lilies were used to create this hat.



Dendrobiums, Phalenopsis, Midellino Reed and Mums form this design.



Gerbera Daisies, Craspedia and colorful plastic forms create contrast.



Callas, Pussy Willow and Echveria sparkle against the mirrored vase.



Birch twigs, Phalenopsis and green Carnations for drama and contrast.



Playful yellow and red Tulips complement glasses and napkins.



Cymbidiums in an Underwater Design with slightly opaque white water.

SAVE the DATE

Your Flower Show and Events Calendar

APRIL

April 11-12, 2015 – “Hort Couture” Garden Club of America Flower Show, Hosted by: The GC of Palm Beach,

Location: Esther B. O’Keeffe Gallery, The Society of the Four Arts, 2 Four Arts Plaza, Palm Beach, Florida

17-19, 2015 “Best of Times” a Garden Club of America Flower Show, Fairfield Garden Club, Centennial Flower Show, Hosted by: Fairfield GC, Location: The Burr Homestead, 739 Old Post Road, Fairfield, Connecticut

April 18-19, 2015

2015 Coronado Flower Show
Coronado Island, CA

Saturday, April 18 and Sunday, April 19, 2015

Sat, 1 pm-5 pm and Sun, 10 am-4 pm

28-29, 2015 – “Florescence, Illusions” a Garden Club of America Major Flower Show, Houston, TX, hosted by: The River Oaks Garden Club, The Garden Club of Houston & The Museum of Fine Arts Houston. 5601 Main Street, Houston, TX

MAY

8-10, 2015 – “Shangri La” a Garden Club of America Major Flower Show, Hosted by: The Honolulu GC, Location: The Honolulu Museum of Art, 900 South Beretania Street, Honolulu, Hawai’i

JUNE

19-21, 2015 – “American Beauty...Timeless”, The Newport Major Flower Show Hosted by: The Preservation Society of Newport County at Rosecliff, 548 Bellevue Avenue, Newport, RI 02840



FLOWER SHOW flowers SUMMER 2015

*BUPPING
STORIES
FOR
OUR
NEXT
EDITION*





FLOWER SHOW

flowers

Volume II

Number 2

Spring 2015

